

For Research Use Only

PPM1E Recombinant monoclonal antibody

Catalog Number: 87405-1-RR



Basic Information

Catalog Number: 87405-1-RR	GenBank Accession Number: BC136290	Purification Method: Protein A purification
Source: Rabbit	GeneID (NCBI): 22843	CloneNo.: 252801H3
Isotype: IgG	UNIPROT ID: Q8WY54	Recommended Dilutions: WB: 1:5000-1:50000 IF-P: 1:250-1:1000
Immunogen Catalog Number: AG18903	Full Name: protein phosphatase 1E (PP2C domain containing)	
	Calculated MW: 764 aa, 85 kDa	
	Observed MW: 85 kDa	

Applications

Tested Applications: WB, IF-P, ELISA	Positive Controls:
Species Specificity: human, mouse, rat	WB: SH-SY5Y cells, mouse brain tissue, rat brain tissue, fetal human brain tissue
	IF-P: mouse brain tissue,

Background Information

Ca²⁺/calmodulin-dependent protein kinase phosphatase (CaMKP-N), also known as PPM1E, is an AMPK α phosphatase, which is up-regulated in human gastric cancer tissues (PMID: 28423719).

Storage

Storage:
Store at -20°C. Stable for one year after shipment.
Storage Buffer:
PBS with 0.02% sodium azide and 50% glycerol, pH7.3
Aliquoting is unnecessary for -20°C storage

For technical support and original validation data for this product please contact:

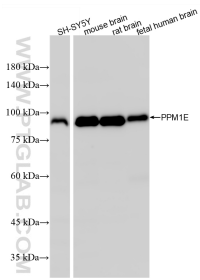
T: 4006900926

E: Proteintech-CN@ptglab.com

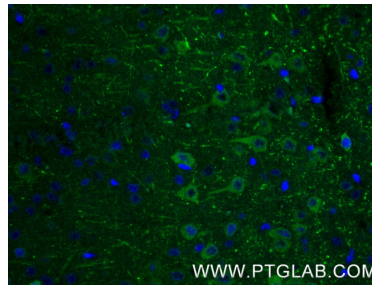
W: ptgcn.com

This product is exclusively available under Proteintech Group brand and is not available to purchase from any other manufacturer.

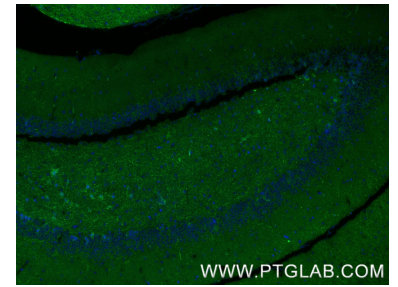
Selected Validation Data



Various lysates were subjected to SDS PAGE followed by western blot with 87405-1-RR (PPM1E antibody) at dilution of 1:10000 incubated at room temperature for 1.5 hours.



Immunofluorescent analysis of (4% PFA) fixed paraffin-embedded mouse brain tissue using PPM1E antibody (87405-1-RR, Clone: 252801H3) at dilution of 1:500 and CoraLite®488-Conjugated Goat Anti-Rabbit IgG(H+L) (SA00013-2). Heat mediated antigen retrieval with Tris-EDTA buffer (pH 9.0).



Immunofluorescent analysis of (4% PFA) fixed paraffin-embedded mouse brain tissue using PPM1E antibody (87405-1-RR, Clone: 252801H3) at dilution of 1:500 and CoraLite®488-Conjugated Goat Anti-Rabbit IgG(H+L) (SA00013-2). Heat mediated antigen retrieval with Tris-EDTA buffer (pH 9.0).