

For Research Use Only

PPM1E Recombinant monoclonal antibody, PBS Only

Catalog Number:87405-1-PBS



Basic Information

Catalog Number: 87405-1-PBS	GenBank Accession Number: BC136290	Purification Method: Protein A purification
Source: Rabbit	GeneID (NCBI): 22843	CloneNo.: 252801H3
Isotype: IgG	UNIPROT ID: Q8WY54	
Immunogen Catalog Number: AG18903	Full Name: protein phosphatase 1E (PP2C domain containing)	
	Calculated MW: 764 aa, 85 kDa	
	Observed MW: 85 kDa	

Applications

Tested Applications:
WB, IF-P, Indirect ELISA

Species Specificity:
human, mouse, rat

Background Information

Ca²⁺/calmodulin-dependent protein kinase phosphatase (CaMKP-N), also known as PPM1E, is an AMPK α phosphatase, which is up-regulated in human gastric cancer tissues (PMID: 28423719).

Storage

Storage:
Store at -80°C.
The product is shipped with ice packs. Upon receipt, store it immediately at -80°C

Storage Buffer:
PBS only, pH7.3

For technical support and original validation data for this product please contact:

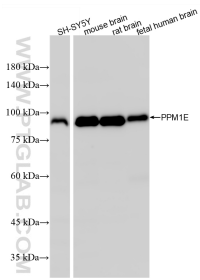
T: 4006900926

E: Proteintech-CN@ptglab.com

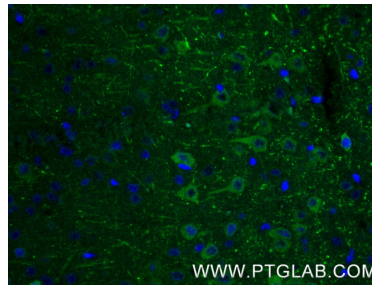
W: ptgcn.com

This product is exclusively available under Proteintech Group brand and is not available to purchase from any other manufacturer.

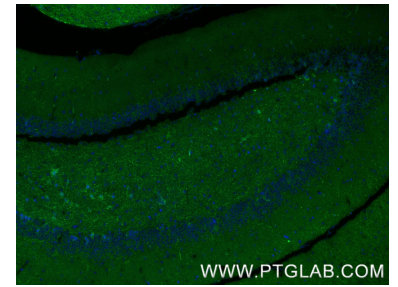
Selected Validation Data



Various lysates were subjected to SDS PAGE followed by western blot with 87405-1-RR (PPM1E antibody) at dilution of 1:10000 incubated at room temperature for 1.5 hours. This data was developed using the same antibody clone with 87405-1-PBS in a different storage buffer formulation.



Immunofluorescent analysis of (4% PFA) fixed paraffin-embedded mouse brain tissue using PPM1E antibody (87405-1-RR, Clone: 252801H3) at dilution of 1:500 and CoraLite®488-Conjugated Goat Anti-Rabbit IgG(H+L) (SA00013-2). Heat mediated antigen retrieval with Tris-EDTA buffer (pH 9.0). This data was developed using the same antibody clone with 87405-1-PBS in a different storage buffer formulation.



Immunofluorescent analysis of (4% PFA) fixed paraffin-embedded mouse brain tissue using PPM1E antibody (87405-1-RR, Clone: 252801H3) at dilution of 1:500 and CoraLite®488-Conjugated Goat Anti-Rabbit IgG(H+L) (SA00013-2). Heat mediated antigen retrieval with Tris-EDTA buffer (pH 9.0). This data was developed using the same antibody clone with 87405-1-PBS in a different storage buffer formulation.