

For Research Use Only

# Mouse Ly-6A/E (Sca-1) Recombinant monoclonal antibody, PBS Only (Capture)

Catalog Number: 87403-3-PBS



## Basic Information

<b>Catalog Number:</b> 87403-3-PBS	<b>GenBank Accession Number:</b> NM_001271416.1	<b>Purification Method:</b> Protein A purification
<b>Source:</b> Rabbit	<b>GeneID (NCBI):</b> 110454	<b>CloneNo.:</b> 252494D1
<b>Isotype:</b> IgG	<b>UNIPROT ID:</b> P05533	
<b>Immunogen Catalog Number:</b> EG4270	<b>Full Name:</b> lymphocyte antigen 6 complex, locus A	
	<b>Calculated MW:</b> 14 kDa	

## Applications

**Tested Applications:**  
Sandwich ELISA, Indirect ELISA

**Species Specificity:**  
mouse

## Background Information

### Storage

**Storage:**  
Store at -80°C.  
**The product is shipped with ice packs. Upon receipt, store it immediately at -80°C**

**Storage Buffer:**  
PBS only, pH7.3

For technical support and original validation data for this product please contact:

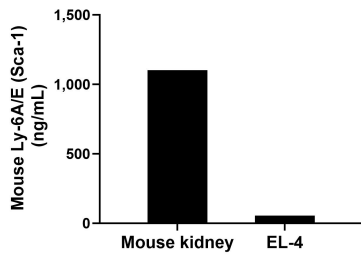
T: 4006900926

E: [Proteintech-CN@ptglab.com](mailto:Proteintech-CN@ptglab.com)

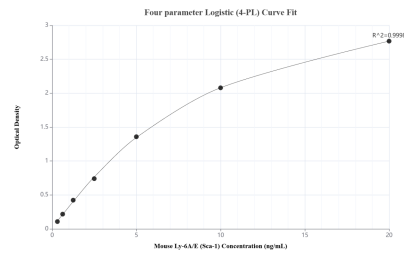
W: [ptgcn.com](http://ptgcn.com)

**This product is exclusively available under Proteintech Group brand and is not available to purchase from any other manufacturer.**

## Selected Validation Data



The mean Ly-6A/E (Sca-1) concentration was determined to be 1,101.47 ng/mL in mouse kidney extract based on a 8.40 mg/mL extract load and 54.43 ng/mL in EL-4 cell extract based on a 3.70 mg/mL extract load.



Sandwich ELISA standard curve of MP03064-1, Mouse Ly-6A/E (Sca-1) Recombinant Matched Antibody Pair - PBS only. 87403-3-PBS was coated to a plate as the capture antibody and incubated with serial dilutions of standard Eg4270. 87403-2-PBS was HRP conjugated as the detection antibody. Range: 0.313-20 ng/mL.