

For Research Use Only

Mouse Ly-6A/E (Sca-1) Recombinant monoclonal antibody, PBS Only (Detector)

Catalog Number: 87403-2-PBS



Basic Information

Catalog Number: 87403-2-PBS	GenBank Accession Number: NM_001271416.1	Purification Method: Protein A purification
Source: Rabbit	GeneID (NCBI): 110454	CloneNo.: 252494A2
Isotype: IgG	UNIPROT ID: P05533	
Immunogen Catalog Number: EG4270	Full Name: lymphocyte antigen 6 complex, locus A	
	Calculated MW: 14 kDa	

Applications

Tested Applications:
Sandwich ELISA, Indirect ELISA

Species Specificity:
mouse

Background Information

Storage

Storage:
Store at -80°C.
The product is shipped with ice packs. Upon receipt, store it immediately at -80°C

Storage Buffer:
PBS only, pH7.3

For technical support and original validation data for this product please contact:

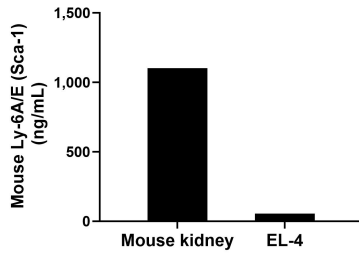
T: 4006900926

E: Proteintech-CN@ptglab.com

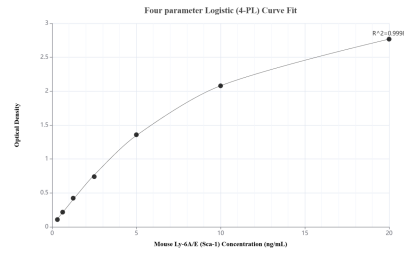
W: ptgcn.com

This product is exclusively available under Proteintech Group brand and is not available to purchase from any other manufacturer.

Selected Validation Data



The mean Ly-6A/E (Sca-1) concentration was determined to be 1,101.47 ng/mL in mouse kidney extract based on a 8.40 mg/mL extract load and 54.43 ng/mL in EL-4 cell extract based on a 3.70 mg/mL extract load.



Sandwich ELISA standard curve of MP03064-1, Mouse Ly-6A/E (Sca-1) Recombinant Matched Antibody Pair - PBS only. 87403-3-PBS was coated to a plate as the capture antibody and incubated with serial dilutions of standard Eg4270. 87403-2-PBS was HRP conjugated as the detection antibody. Range: 0.313-20 ng/mL.