

For Research Use Only

# CD1e Recombinant monoclonal antibody, PBS Only

Catalog Number:87398-1-PBS



## Basic Information

Catalog Number:

87398-1-PBS

Source:

Rabbit

Isotype:

IgG

Immunogen Catalog Number:

EG9185

GenBank Accession Number:

GeneID (NCBI):

UNIPROT ID:

P15812

Full Name:

Observed MW:

27 kDa, 30-45 kDa

Purification Method:

Protein A purification

CloneNo.:

252400H8

## Applications

Tested Applications:

WB, IF/ICC, Indirect ELISA

Species Specificity:

human

## Background Information

CD1e molecule (CD1e, also known as R2 and CD1A) is a member of the CD1 family of transmembrane glycoproteins, which are structurally related to the major histocompatibility complex (MHC) proteins and form heterodimers with beta-2-microglobulin (PMID: 10948205). The discoverers of the CD1 locus originally separated CD1 proteins into group 1 (CD1a, CD1b, and CD1c) and group 2 (CD1d), based on amino acid sequence homology (PMID: 2467814). CD1e is an important modulator of group 1 and group 2 CD1-restricted responses influencing the lipid antigen availability and the generation and persistence of CD1-lipid complexes (PMID: 21844346). CD1e may exhibit varying degrees of molecular weight migration in immunoblotting due to differences in glycosylation modification levels. The molecular weight of non N-glycosylated CD1e is 27 kDa (PMID: 19196239).

## Storage

Storage:

Store at -80°C.

**The product is shipped with ice packs. Upon receipt, store it immediately at -80°C**

Storage Buffer:

PBS only, pH7.3

For technical support and original validation data for this product please contact:

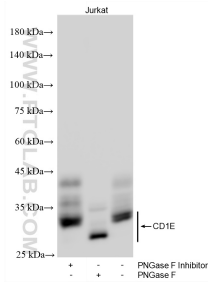
T: 4006900926

E: [Proteintech-CN@ptglab.com](mailto:Proteintech-CN@ptglab.com)

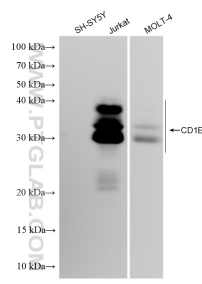
W: [ptgcn.com](http://ptgcn.com)

**This product is exclusively available under Proteintech Group brand and is not available to purchase from any other manufacturer.**

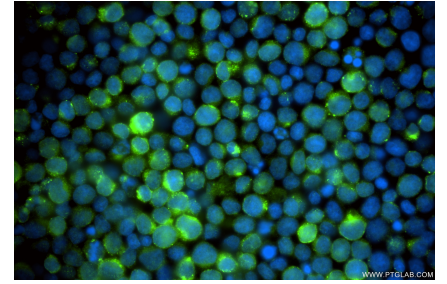
## Selected Validation Data



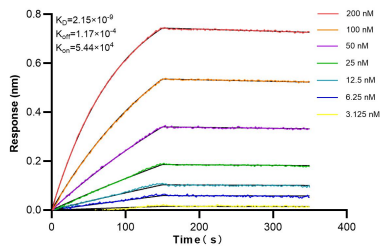
Jurkat cells were subjected to SDS PAGE followed by western blot with 87398-1-RR (CD1e antibody) at dilution of 1:5000 incubated at room temperature for 1.5 hours. This data was developed using the same antibody clone with 87398-1-PBS in a different storage buffer formulation.



Various lysates were subjected to SDS PAGE followed by western blot with 87398-1-RR (CD1e antibody) at dilution of 1:5000 incubated at room temperature for 1.5 hours. This data was developed using the same antibody clone with 87398-1-PBS in a different storage buffer formulation.



Immunofluorescent analysis of (4% PFA) fixed Jurkat cells using CD1e antibody (87398-1-RR, Clone: 252400H8 ) at dilution of 1:500 and CoraLite®488-Conjugated Goat Anti-Rabbit IgG(H+L) (SA00013-2). This data was developed using the same antibody clone with 87398-1-PBS in a different storage buffer formulation.



Biolayer interferometry (BLI) kinetic assays of 87398-1-RR against Human CD1e were performed. The affinity constant is 2.15 nM.