

For Research Use Only

ARPC1B Recombinant monoclonal antibody

Catalog Number: 87393-1-RR



Basic Information

Catalog Number:

87393-1-RR

Source:

Rabbit

Isotype:

IgG

Immunogen Catalog Number:

AG29001

GenBank Accession Number:

BC007555

GeneID (NCBI):

10095

UNIPROT ID:

O15143

Full Name:

actin related protein 2/3 complex, subunit 1B, 41kDa

Calculated MW:

41 kDa

Observed MW:

37 kDa

Purification Method:

Protein A purification

CloneNo.:

252807F12

Recommended Dilutions:

WB: 1:5000-1:50000

IP: 0.5-4.0 ug for 1.0-3.0 mg of total protein lysate

Applications

Tested Applications:

WB, IP, ELISA

Species Specificity:

human, mouse, rat

Positive Controls:

WB : HeLa cells, HEK-293T cells, rat spleen tissue, mouse spleen tissue

IP : HeLa cells,

Background Information

ARPC1B also known as ARC41, p41-ARC, or p40-ARC, is one of seven subunits of the human Arp2/3 protein complex, that belongs to the SOP2 family. ARPC1B localizes on centrosomes and has a distinct role in centrosomal homeostasis. ARPC1B is both a physiological activator and substrate of Aurora A kinase, and these interactions help to maintain mitotic integrity in mammalian cells. In recent research, ARPC1B is selected as a candidate prediction marker for sensitivity of Choroidal malignant melanomas to radiotherapy.

Storage

Storage:

Store at -20°C. Stable for one year after shipment.

Storage Buffer:

PBS with 0.02% sodium azide and 50% glycerol, pH7.3

Aliquoting is unnecessary for -20°C storage

For technical support and original validation data for this product please contact:

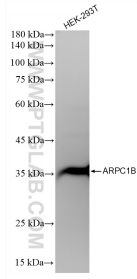
T: 4006900926

E: Proteintech-CN@ptglab.com

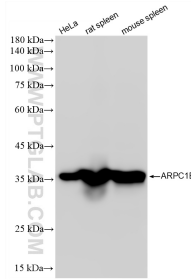
W: ptgcn.com

This product is exclusively available under Proteintech Group brand and is not available to purchase from any other manufacturer.

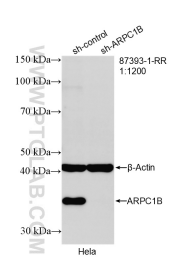
Selected Validation Data



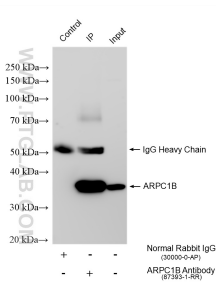
HEK-293T cells were subjected to SDS PAGE followed by western blot with 87393-1-RR (ARPC1B antibody) at dilution of 1:20000 incubated at room temperature for 1.5 hours.



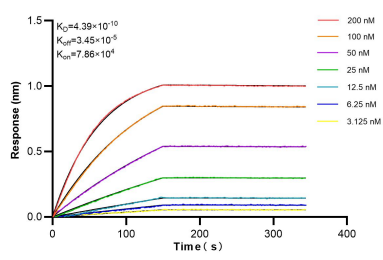
Various lysates were subjected to SDS PAGE followed by western blot with 87393-1-RR (ARPC1B antibody) at dilution of 1:20000 incubated at room temperature for 1.5 hours.



WB result of ARPC1B antibody (87393-1-RR; 1:1200; incubated at room temperature for 1.5 hours) with sh-Control and sh-ARPC1B transfected HeLa cells.



IP result of anti-ARPC1B (IP:87393-1-RR, 4ug; Detection:87393-1-RR 1:5000) with HeLa cells lysate 1200 ug.



Biolayer interferometry (BLI) kinetic assays of 87393-1-RR against Human ARPC1B were performed. The affinity constant is 0.439 nM.