

For Research Use Only

ARPC1B Recombinant monoclonal antibody, PBS Only (Capture)

Catalog Number: 87393-1-PBS



Basic Information

Catalog Number: 87393-1-PBS	GenBank Accession Number: BC007555	Purification Method: Protein A purification
Source: Rabbit	GeneID (NCBI): 10095	CloneNo.: 252807F12
Isotype: IgG	UNIPROT ID: O15143	
Immunogen Catalog Number: AG29001	Full Name: actin related protein 2/3 complex, subunit 1B, 41kDa	
	Calculated MW: 41 kDa	
	Observed MW: 37 kDa	

Applications

Tested Applications:
WB, IP, Cytometric bead array, Indirect ELISA

Species Specificity:
human, mouse, rat

Background Information

ARPC1B also known as ARC41, p41-ARC, or p40-ARC, is one of seven subunits of the human Arp2/3 protein complex, that belongs to the SOP2 family. ARPC1B localizes on centrosomes and has a distinct role in centrosomal homeostasis. ARPC1B is both a physiological activator and substrate of Aurora A kinase, and these interactions help to maintain mitotic integrity in mammalian cells. In recent research, ARPC1B is selected as a candidate prediction marker for sensitivity of Choroidal malignant melanomas to radiotherapy.

Storage

Storage:
Store at -80°C.
The product is shipped with ice packs. Upon receipt, store it immediately at -80°C

Storage Buffer:
PBS only, pH7.3

For technical support and original validation data for this product please contact:

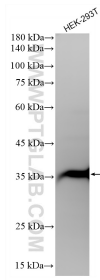
T: 4006900926

E: Proteintech-CN@ptglab.com

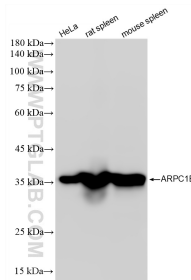
W: ptgcn.com

This product is exclusively available under Proteintech Group brand and is not available to purchase from any other manufacturer.

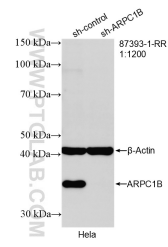
Selected Validation Data



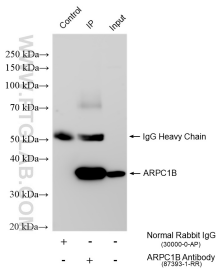
HEK-293T cells were subjected to SDS PAGE followed by western blot with 87393-1-RR (ARPC1B antibody) at dilution of 1:20000 incubated at room temperature for 1.5 hours. This data was developed using the same antibody clone with 87393-1-PBS in a different storage buffer formulation.



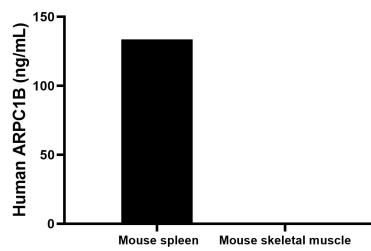
Various lysates were subjected to SDS PAGE followed by western blot with 87393-1-RR (ARPC1B antibody) at dilution of 1:20000 incubated at room temperature for 1.5 hours. This data was developed using the same antibody clone with 87393-1-PBS in a different storage buffer formulation.



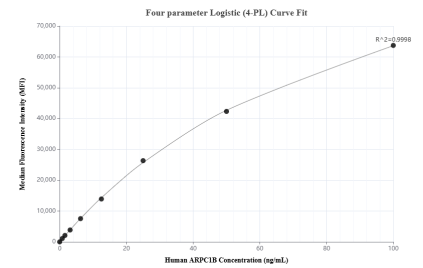
WB result of ARPC1B (87393-1-RR; 1:1200; incubated at room temperature for 1.5 hours) with sh-Control and sh-ARPC1B transfected HeLa cells. This data was developed using the same antibody clone with 87393-1-PBS in a different storage buffer formulation.



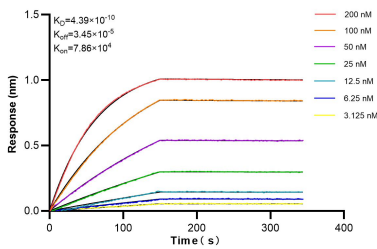
IP result of anti-ARPC1B (IP:87393-1-RR, 4ug; Detection:87393-1-RR 1:5000) with HeLa cells lysate 1200 ug. This data was developed using the same antibody clone with 87393-1-PBS in a different storage buffer formulation.



The mean ARPC1B concentration was determined to be 133.6 ng/mL in Mouse spleen tissue extract based on a 6.4 mg/mL extract load. Mouse skeletal muscle tissue extract were served as a negative control.



Cytometric bead array standard curve of MP02990-1, ARPC1B Recombinant Matched Antibody Pair, PBS Only. Capture antibody: 87393-1-PBS. Detection antibody: 87393-3-PBS. Standard: Ag29001. Range: 0.781-100 ng/mL.



Biolayer interferometry (BLI) kinetic assays of 87393-1-RR against Human ARPC1B were performed. The affinity constant is 0.439 nM.