

For Research Use Only

# PABPN1 Recombinant monoclonal antibody

Catalog Number: 87392-1-RR



## Basic Information

<b>Catalog Number:</b> 87392-1-RR	<b>GenBank Accession Number:</b> BC010939	<b>Purification Method:</b> Protein A purification
<b>Source:</b> Rabbit	<b>GeneID (NCBI):</b> 8106	<b>CloneNo.:</b> 252794F12
<b>Isotype:</b> IgG	<b>UNIPROT ID:</b> Q86U42	<b>Recommended Dilutions:</b> WB: 1:5000-1:50000 IF/ICC: 1:250-1:1000
<b>Immunogen Catalog Number:</b> AG27814	<b>Full Name:</b> poly(A) binding protein, nuclear 1	
	<b>Calculated MW:</b> 33 kDa	
	<b>Observed MW:</b> 50-56 kDa	

## Applications

<b>Tested Applications:</b> WB, IF/ICC, ELISA	<b>Positive Controls:</b> WB : HeLa cells, Jurkat cells, SH-SY5Y cells, MCF-7 cells, 4T1 cells, NIH/3T3 cells, PC-12 cells
<b>Species Specificity:</b> human, mouse, rat	<b>IF/ICC :</b> NIH/3T3 cells, HeLa cells

## Background Information

Poly(A) Binding Protein Nuclear 1 (PABPN1) is one of the isoforms of poly(A) binding protein (PABP) that locating to the nucleus in eukaryotic cells. And PABPN1 plays important role in mRNA stability by regulating of poly-A tail length, mRNA decay and proximal polyadenylation site (PAS) utilization at the 3'-UTR (PMID:23300856). Another report showed that PABPN1 shuttles between the nucleus and the cytoplasm to export poly(A) RNA from the nucleus (PMID:23601051). It is reported that PABPN1 is ubiquitously expressed in almost all tissues, however, mutations in PABPN1 causes Oculopharyngeal Muscular Dystrophy (OPMD) which affected in skeletal muscles specifically. Because of a mild reduction in PABPN1 levels is sufficient to induce muscle wasting (PMID:27152426). Acetylation, Methylation, Phosphoprotein are common post-translational modifications of PABPN1 protein. And 50-55 kDa bands have been reported (PMID: 29939290; 28361972).

## Storage

**Storage:**  
Store at -20°C. Stable for one year after shipment.  
**Storage Buffer:**  
PBS with 0.02% sodium azide and 50% glycerol, pH7.3  
**Aliquoting is unnecessary for -20°C storage**

For technical support and original validation data for this product please contact:

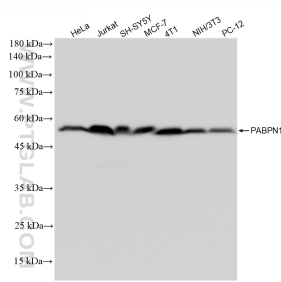
T: 4006900926

E: [Proteintech-CN@ptglab.com](mailto:Proteintech-CN@ptglab.com)

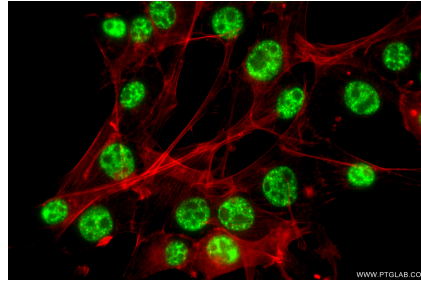
W: [ptgcn.com](http://ptgcn.com)

**This product is exclusively available under Proteintech Group brand and is not available to purchase from any other manufacturer.**

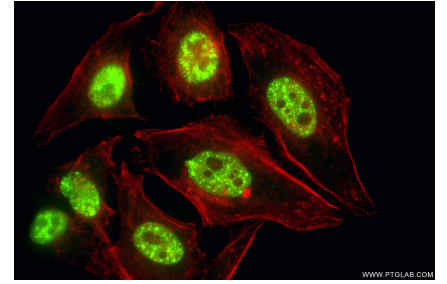
## Selected Validation Data



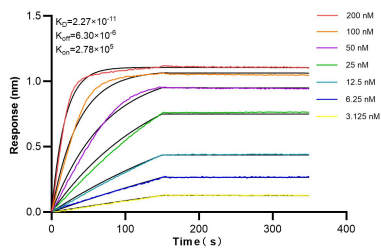
Various lysates were subjected to SDS PAGE followed by western blot with 87392-1-RR (PABPN1 antibody) at dilution of 1:10000 incubated at room temperature for 1.5 hours.



Immunofluorescent analysis of (4% PFA) fixed NIH/3T3 cells using PABPN1 antibody (87392-1-RR, Clone: 252794F12) at dilution of 1:500 and CoraLite® 488-Conjugated Goat Anti-Rabbit IgG(H+L) (SA00013-2), CL594-Phalloidin (red).



Immunofluorescent analysis of (4% PFA) fixed HeLa cells using PABPN1 antibody (87392-1-RR, Clone: 252794F12) at dilution of 1:500 and CoraLite® 488-Conjugated Goat Anti-Rabbit IgG(H+L) (SA00013-2), CL594-Phalloidin (red).



Biolayer interferometry (BLI) kinetic assays of 87382-2-RR against Human PABPN1 were performed. The affinity constant is 22.7 pM.