

For Research Use Only

# Complement component C3 Recombinant monoclonal antibody, PBS Only (Detector)

Catalog Number: 87386-4-PBS



## Basic Information

<b>Catalog Number:</b> 87386-4-PBS	<b>GenBank Accession Number:</b> NM_000064.4	<b>Purification Method:</b> Protein A purification
<b>Source:</b> Rabbit	<b>GeneID (NCBI):</b> 718	<b>CloneNo.:</b> 252159D7
<b>Isotype:</b> IgG	<b>UNIPROT ID:</b> P01024	
<b>Immunogen Catalog Number:</b> EG4880	<b>Full Name:</b> complement component 3	
	<b>Calculated MW:</b> 187 kDa	

## Applications

**Tested Applications:**  
Sandwich ELISA, Indirect ELISA

**Species Specificity:**  
human

## Background Information

### Storage

**Storage:**  
Store at -80°C.  
**The product is shipped with ice packs. Upon receipt, store it immediately at -80°C**

**Storage Buffer:**  
PBS only, pH7.3

For technical support and original validation data for this product please contact:

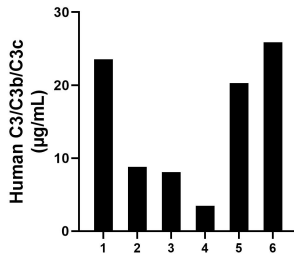
T: 4006900926

E: [Proteintech-CN@ptglab.com](mailto:Proteintech-CN@ptglab.com)

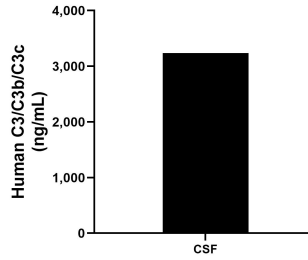
W: [ptgcn.com](http://ptgcn.com)

**This product is exclusively available under Proteintech Group brand and is not available to purchase from any other manufacturer.**

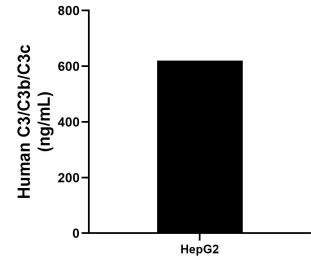
## Selected Validation Data



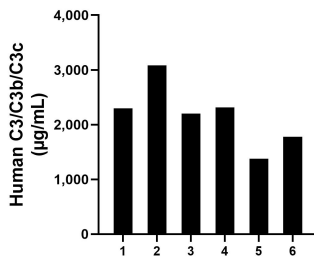
Saliva of six individual healthy human donors was measured. The human C3/C3b/C3c concentration of detected samples was determined to be 15.02 µg/mL with a range of 3.49 - 25.88 µg/mL.



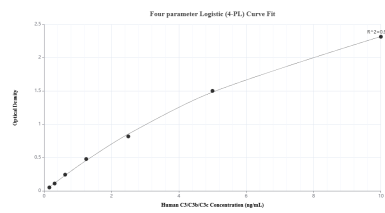
CSF of one individual healthy human donors was measured. The human C3/C3b/C3c concentration of detected samples was determined to be 3,234.93 ng/mL.



HepG2 (human hepatocellular carcinoma cells) were cultured in DMEM supplemented with 10% fetal bovine serum, 2.5 mM L-glutamine, 100 U/mL penicillin, and 100 µg/mL streptomycin sulfate. An aliquot of the cell culture supernate was removed, assayed for human C3/C3b/C3c, and measured 620.71 ng/mL.



Plasma of six individual healthy human donors was measured. The human C3/C3b/C3c concentration of detected samples was determined to be 2,175.94 µg/mL with a range of 1,379.7 - 3,080.62 µg/mL.



Sandwich ELISA standard curve of MP03006-2, Human C3/C3b/C3c Recombinant Matched Antibody Pair - PBS only. 87386-5-PBS was coated to a plate as the capture antibody and incubated with serial dilutions of standard Eg4880. 87386-4-PBS was HRP conjugated as the detection antibody. Range: 0.156-10 ng/mL