

For Research Use Only

Complement component C3 Recombinant monoclonal antibody, PBS Only (Capture)

Catalog Number: 87386-3-PBS



Basic Information

Catalog Number: 87386-3-PBS	GenBank Accession Number: NM_000064.4	Purification Method: Protein A purification
Source: Rabbit	GeneID (NCBI): 718	CloneNo.: 252159G11
Isotype: IgG	UNIPROT ID: P01024	
Immunogen Catalog Number: EG4880	Full Name: complement component 3	
	Calculated MW: 187 kDa	

Applications

Tested Applications:
Cytometric bead array, Indirect ELISA

Species Specificity:
human

Background Information

Storage

Storage:
Store at -80°C.
The product is shipped with ice packs. Upon receipt, store it immediately at -80°C

Storage Buffer:
PBS only, pH7.3

For technical support and original validation data for this product please contact:

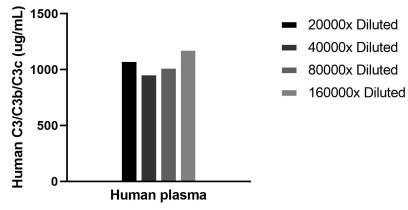
T: 4006900926

E: Proteintech-CN@ptglab.com

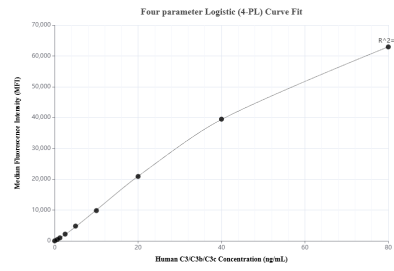
W: ptgcn.com

This product is exclusively available under Proteintech Group brand and is not available to purchase from any other manufacturer.

Selected Validation Data



The mean C3/C3b/C3c concentration was determined to be 1064 ug/mL in Human plasma.



Cytometric bead array standard curve of MP03006-1, C3/C3b/C3c Recombinant Matched Antibody Pair, PBS Only. Capture antibody: 87386-3-PBS. Detection antibody: 87386-2-PBS. Standard: Eg4880. Range: 0.625-80 ng/mL.