

For Research Use Only

# DPEP1 Recombinant monoclonal antibody

Catalog Number:87384-1-RR



## Basic Information

<b>Catalog Number:</b> 87384-1-RR	<b>GenBank Accession Number:</b> NM_001128141.3	<b>Purification Method:</b> Protein A purification
<b>Source:</b> Rabbit	<b>GeneID (NCBI):</b> 1800	<b>CloneNo.:</b> 252686H3
<b>Isotype:</b> IgG	<b>UNIPROT ID:</b> P16444	<b>Recommended Dilutions:</b> WB: 1:5000-1:50000
<b>Immunogen Catalog Number:</b> EG5510	<b>Full Name:</b> dipeptidase 1 (renal)	
	<b>Calculated MW:</b> 46 kDa	
	<b>Observed MW:</b> 46 kDa	

## Applications

<b>Tested Applications:</b> WB, ELISA	<b>Positive Controls:</b> WB : human testis tissue,
<b>Species Specificity:</b> human	

## Background Information

DPEP1(Dipeptidase 1) is also named as MDP, RDP and belongs to the peptidase M19 family. It is a glycoprotein that plays an important role in the regulation of Leukotriene activity. DPEP1 converts Leukotriene D4 to Leukotriene E4.

## Storage

**Storage:**  
Store at -20°C. Stable for one year after shipment.  
**Storage Buffer:**  
PBS with 0.02% sodium azide and 50% glycerol, pH7.3  
Aliquoting is unnecessary for -20°C storage

For technical support and original validation data for this product please contact:

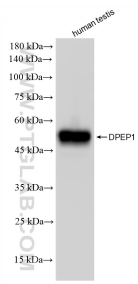
T: 4006900926

E: [Proteintech-CN@ptglab.com](mailto:Proteintech-CN@ptglab.com)

W: [ptgcn.com](http://ptgcn.com)

This product is exclusively available under Proteintech Group brand and is not available to purchase from any other manufacturer.

## Selected Validation Data



human testis tissue were subjected to SDS PAGE followed by western blot with 87384-1-RR (DPEP1 antibody) at dilution of 1:10000 incubated at room temperature for 1.5 hours.