

For Research Use Only

# GFRA1 Recombinant monoclonal antibody

Catalog Number:87383-1-RR



## Basic Information

<b>Catalog Number:</b> 87383-1-RR	<b>GenBank Accession Number:</b> NM_005264.8	<b>Purification Method:</b> Protein A purification
<b>Source:</b> Rabbit	<b>GeneID (NCBI):</b> 2674	<b>CloneNo.:</b> 252616C9
<b>Isotype:</b> IgG	<b>UNIPROT ID:</b> P56159-1	<b>Recommended Dilutions:</b> WB: 1:1000-1:6000
<b>Immunogen Catalog Number:</b> EG5427	<b>Full Name:</b> GDNF family receptor alpha 1	
	<b>Calculated MW:</b> 51 kDa	
	<b>Observed MW:</b> 55 kDa	

## Applications

<b>Tested Applications:</b> WB, ELISA	<b>Positive Controls:</b> WB : MCF-7 cells, ACHN cells
<b>Species Specificity:</b> human	

## Background Information

GFRA1, also named as GDNFRA, RETL1 and TRNR1, is a receptor for GDNF. It mediates the GDNF-induced autophosphorylation and activation of the RET receptor. GFRA1 has two isoforms with MW 45-50 kDa and 50-55 kDa.

## Storage

**Storage:**  
Store at -20°C. Stable for one year after shipment.  
**Storage Buffer:**  
PBS with 0.02% sodium azide and 50% glycerol, pH7.3  
Aliquoting is unnecessary for -20°C storage

For technical support and original validation data for this product please contact:

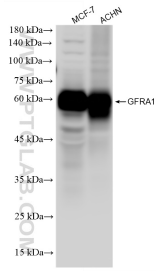
T: 4006900926

E: [Proteintech-CN@ptglab.com](mailto:Proteintech-CN@ptglab.com)

W: [ptgcn.com](http://ptgcn.com)

**This product is exclusively available under Proteintech Group brand and is not available to purchase from any other manufacturer.**

## Selected Validation Data



Various lysates were subjected to SDS PAGE followed by western blot with 87383-1-RR (GFRA1 antibody) at dilution of 1:3000 incubated at room temperature for 1.5 hours.