

For Research Use Only

RHBG Recombinant monoclonal antibody

Catalog Number: 87381-1-RR



Basic Information

Catalog Number:

87381-1-RR

Source:

Rabbit

Isotype:

IgG

GenBank Accession Number:

BC065218

GeneID (NCBI):

57127

UNIPROT ID:

Q9H310

Full Name:

Rh family, B glycoprotein
(gene/pseudogene)

Calculated MW:

441 aa, 47 kDa

Observed MW:

50 kDa

Purification Method:

Protein A purification

CloneNo.:

252509G12

Recommended Dilutions:

WB: 1:2000-1:10000

Applications

Tested Applications:

WB, ELISA

Species Specificity:

human, mouse, rat

Positive Controls:

WB: mouse kidney tissue, rat kidney tissue, mouse liver tissue, rat liver tissue, human kidney tissue

Background Information

RHBG also known as SLC42A2, is one of two non-erythroid members of the Rhesus (Rh) protein family. RHBG protein is present in the kidney and is expressed in distal nephron segments, from the distal convoluted tubule through the collecting duct (PMID: 23324176).

Storage

Storage:

Store at -20°C. Stable for one year after shipment.

Storage Buffer:

PBS with 0.02% sodium azide and 50% glycerol, pH7.3

Aliquoting is unnecessary for -20°C storage

For technical support and original validation data for this product please contact:

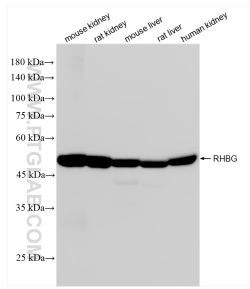
T: 4006900926

E: Proteintech-CN@ptglab.com

W: ptgcn.com

This product is exclusively available under Proteintech Group brand and is not available to purchase from any other manufacturer.

Selected Validation Data



Various lysates were subjected to SDS PAGE followed by western blot with 87381-1-RR (RHBG antibody) at dilution of 1:5000 incubated at room temperature for 1.5 hours.