

For Research Use Only

# RHBG Recombinant monoclonal antibody, PBS Only

Catalog Number: 87381-1-PBS



## Basic Information

Catalog Number:

87381-1-PBS

Source:

Rabbit

Isotype:

IgG

GenBank Accession Number:

BC065218

GeneID (NCBI):

57127

UNIPROT ID:

Q9H310

Full Name:

Rh family, B glycoprotein  
(gene/pseudogene)

Calculated MW:

441 aa, 47 kDa

Observed MW:

50 kDa

Purification Method:

Protein A purification

CloneNo.:

252509G12

## Applications

Tested Applications:

WB, Indirect ELISA

Species Specificity:

human, mouse, rat

## Background Information

RHBG also known as SLC42A2, is one of two non-erythroid members of the Rhesus (Rh) protein family. RHBG protein is present in the kidney and is expressed in distal nephron segments, from the distal convoluted tubule through the collecting duct (PMID: 23324176).

## Storage

Storage:

Store at -80°C.

The product is shipped with ice packs. Upon receipt, store it immediately at -80°C

Storage Buffer:

PBS only, pH7.3

For technical support and original validation data for this product please contact:

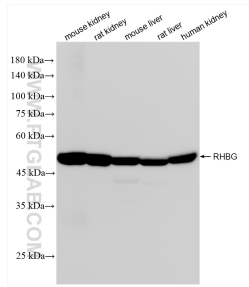
T: 4006900926

E: [Proteintech-CN@ptglab.com](mailto:Proteintech-CN@ptglab.com)

W: [ptgcn.com](http://ptgcn.com)

This product is exclusively available under Proteintech Group brand and is not available to purchase from any other manufacturer.

## Selected Validation Data



Various lysates were subjected to SDS PAGE followed by western blot with 87381-1-RR (RHBG antibody) at dilution of 1:5000 incubated at room temperature for 1.5 hours. This data was developed using the same antibody clone with 87381-1-PBS in a different storage buffer formulation.