

For Research Use Only

# LSP1 Recombinant monoclonal antibody

Catalog Number:87378-1-RR



## Basic Information

<b>Catalog Number:</b> 87378-1-RR	<b>GenBank Accession Number:</b> NM_002339.2	<b>Purification Method:</b> Protein A purification
<b>Source:</b> Rabbit	<b>GeneID (NCBI):</b> 4046	<b>CloneNo.:</b> 252179A7
<b>Isotype:</b> IgG	<b>UNIPROT ID:</b> P33241-1	<b>Recommended Dilutions:</b> WB: 1:5000-1:50000 IHC: 1:500-1:2000 IF/ICC: 1:250-1:1000
<b>Immunogen Catalog Number:</b> EG5464	<b>Full Name:</b> lymphocyte-specific protein 1	
	<b>Calculated MW:</b> 37 kDa	
	<b>Observed MW:</b> 52 kDa	

## Applications

**Tested Applications:**  
WB, IHC, IF/ICC, ELISA

**Species Specificity:**  
human

**Note-IHC: suggested antigen retrieval with TE buffer pH 9.0; (\*) Alternatively, antigen retrieval may be performed with citrate buffer pH 6.0**

**Positive Controls:**

**WB:** Raji cells, HL-60 cells, U-937 cells, Daudi cells, HuT 78 cells

**IHC:** human tonsillitis tissue,

**IF/ICC:** Daudi cells,

## Background Information

Lymphocyte-specific protein 1(LSP1), also known as leukocyte-specific protein 1, is an F-actin binding and cytoskeleton associated protein. The protein is expressed in lymphocytes, neutrophils, and macrophages. LSP1 is a substrate for mitogen-activated protein kinase (MAPK)-activated protein kinase 2 and protein kinase C. The implication of LSP1 in diverse biological processes, such as inflammation and malignancy, suggests the major regulatory role of LSP1 in signal transduction(PMID: 38254711).

## Storage

**Storage:**

Store at -20°C. Stable for one year after shipment.

**Storage Buffer:**

PBS with 0.02% sodium azide and 50% glycerol, pH7.3

Aliquoting is unnecessary for -20°C storage

For technical support and original validation data for this product please contact:

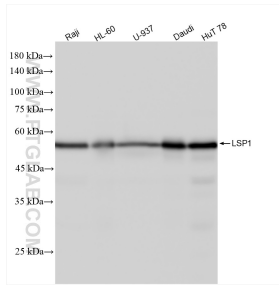
T: 4006900926

E: Proteintech-CN@ptglab.com

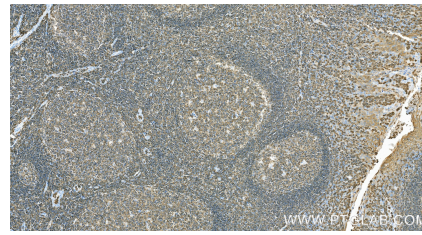
W: ptgcn.com

**This product is exclusively available under Proteintech Group brand and is not available to purchase from any other manufacturer.**

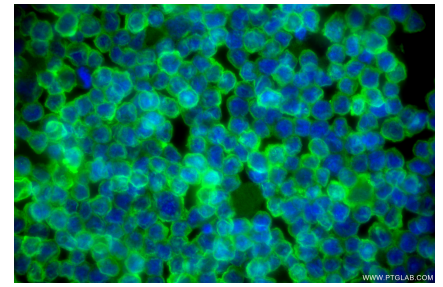
## Selected Validation Data



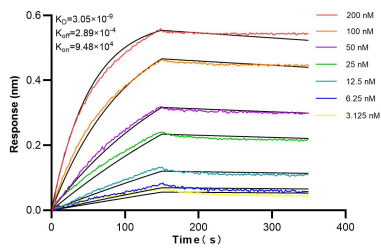
Various lysates were subjected to SDS PAGE followed by western blot with 87378-1-RR (LSP1 antibody) at dilution of 1:10000 incubated at room temperature for 1.5 hours.



Immunohistochemical analysis of paraffin-embedded human tonsillitis tissue slide using 87378-1-RR (LSP1 antibody) at dilution of 1:1000 (under 20x lens). Heat mediated antigen retrieval with Tris-EDTA buffer (pH 9.0).



Immunofluorescent analysis of (4% PFA) fixed Daudi cells using LSP1 antibody (87378-1-RR, Clone: 252179A7) at dilution of 1:500 and CoraLite@488-Conjugated Goat Anti-Rabbit IgG(H+L) (SA00013-2).



Biolayer interferometry (BLI) kinetic assays of 87378-1-RR against Human LSP1 were performed. The affinity constant is 3.05 nM.