

For Research Use Only

# CCL4L1 Recombinant monoclonal antibody

Catalog Number:87376-1-RR



## Basic Information

<b>Catalog Number:</b> 87376-1-RR	<b>GenBank Accession Number:</b> N/A	<b>Purification Method:</b> Protein A purification
<b>Source:</b> Rabbit	<b>GeneID (NCBI):</b> 9560	<b>CloneNo.:</b> 251685H1
<b>Isotype:</b> IgG	<b>UNIPROT ID:</b> Q8NHW4-1	<b>Recommended Dilutions:</b> WB: 1:2000-1:10000
<b>Immunogen Catalog Number:</b> EG5335	<b>Full Name:</b> chemokine (C-C motif) ligand 4-like 1	
	<b>Calculated MW:</b> 10 kDa	
	<b>Observed MW:</b> 15 kDa	

## Applications

<b>Tested Applications:</b> WB, ELISA	<b>Positive Controls:</b> WB : PMA, LPS and Brefeldin A treated THP-1 cells,
<b>Species Specificity:</b> human	

## Background Information

### Storage

**Storage:**  
Store at -20°C. Stable for one year after shipment.

**Storage Buffer:**  
PBS with 0.02% sodium azide and 50% glycerol, pH7.3

Aliquoting is unnecessary for -20°C storage

For technical support and original validation data for this product please contact:

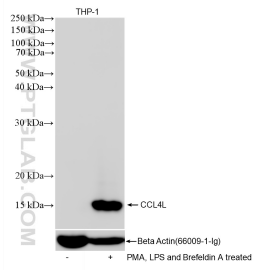
T: 4006900926

E: [Proteintech-CN@ptglab.com](mailto:Proteintech-CN@ptglab.com)

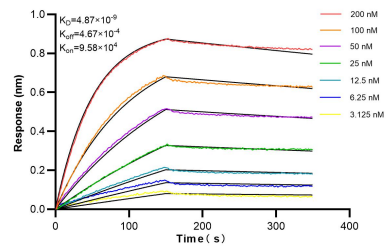
W: [ptgcn.com](http://ptgcn.com)

This product is exclusively available under Proteintech Group brand and is not available to purchase from any other manufacturer.

## Selected Validation Data



PMA, LPS and Brefeldin A treated THP-1 cells were subjected to SDS PAGE followed by western blot with 87376-1-RR (CCL4L1 antibody) at dilution of 1:5000 incubated at room temperature for 1.5 hours.



Biolayer interferometry (BLI) kinetic assays of 87376-1-RR against Human CCL4L1 were performed. The affinity constant is 4.87 nM.