

For Research Use Only

# MSMB Recombinant monoclonal antibody, PBS Only

Catalog Number:87375-1-PBS



## Basic Information

<b>Catalog Number:</b> 87375-1-PBS	<b>GenBank Accession Number:</b> BC005257	<b>Purification Method:</b> Protein A purification
<b>Source:</b> Rabbit	<b>GeneID (NCBI):</b> 4477	<b>CloneNo.:</b> 252111A5
<b>Isotype:</b> IgG	<b>UNIPROT ID:</b> P08118	
<b>Immunogen Catalog Number:</b> AG8674	<b>Full Name:</b> microseminoprotein, beta-	
	<b>Calculated MW:</b> 114 aa, 13 kDa	
	<b>Observed MW:</b> 15 kDa	

## Applications

**Tested Applications:**  
WB, Indirect ELISA

**Species Specificity:**  
human

## Background Information

MSMB is a member of the immunoglobulin binding factor family. It is synthesized by the epithelial cells of the prostate gland and secreted into the seminal plasma. This protein has inhibin-like activity. It may have a role as an autocrine paracrine factor in the uterus, breast and other female reproductive tissues. The expression of the encoded protein is found to be decreased in prostate cancer.

## Storage

**Storage:**  
Store at -80°C.  
**The product is shipped with ice packs. Upon receipt, store it immediately at -80°C**

**Storage Buffer:**  
PBS only, pH7.3

For technical support and original validation data for this product please contact:

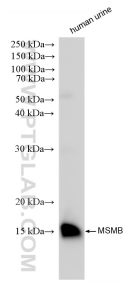
T: 4006900926

E: [Proteintech-CN@ptglab.com](mailto:Proteintech-CN@ptglab.com)

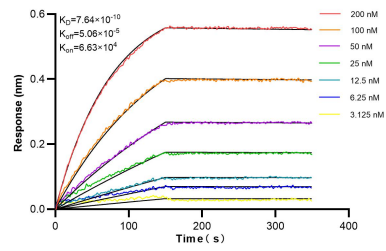
W: [ptgcn.com](http://ptgcn.com)

**This product is exclusively available under Proteintech Group brand and is not available to purchase from any other manufacturer.**

## Selected Validation Data



human urine sample were subjected to SDS PAGE followed by western blot with 87375-1-RR (MSMB antibody) at dilution of 1:10000 incubated at room temperature for 1.5 hours. This data was developed using the same antibody clone with 87375-1-PBS in a different storage buffer formulation.



Biolayer interferometry (BLI) kinetic assays of 87375-1-RR against Human MSMB were performed. The affinity constant is 0.764 nM.