

For Research Use Only

# OTX2 Recombinant monoclonal antibody, PBS Only (Capture)

Catalog Number: 87372-3-PBS



## Basic Information

<b>Catalog Number:</b> 87372-3-PBS	<b>GenBank Accession Number:</b> BC032579	<b>Purification Method:</b> Protein A purification
<b>Source:</b> Rabbit	<b>GeneID (NCBI):</b> 5015	<b>CloneNo.:</b> 252762G7
<b>Isotype:</b> IgG	<b>UNIPROT ID:</b> P32243	
<b>Immunogen Catalog Number:</b> AG4323	<b>Full Name:</b> orthodenticle homeobox 2	
	<b>Calculated MW:</b> 297 aa, 32 kDa	

## Applications

**Tested Applications:**  
Cytometric bead array, Indirect ELISA

**Species Specificity:**  
human

## Background Information

### Storage

**Storage:**  
Store at -80°C.  
**The product is shipped with ice packs. Upon receipt, store it immediately at -80°C**

**Storage Buffer:**  
PBS only, pH7.3

For technical support and original validation data for this product please contact:

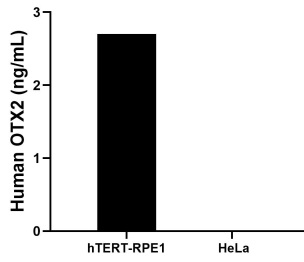
T: 4006900926

E: [Proteintech-CN@ptglab.com](mailto:Proteintech-CN@ptglab.com)

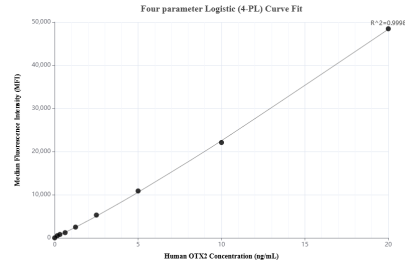
W: [ptgcn.com](http://ptgcn.com)

**This product is exclusively available under Proteintech Group brand and is not available to purchase from any other manufacturer.**

## Selected Validation Data



The mean OTX2 concentration was determined to be 2.7 ng/mL in hTERT-RPE1 cell extract based on a 1.3 mg/mL extract load, HeLa cell extract were served as a negative control.



Cytometric bead array standard curve of MP02987-1, OTX2 Recombinant Matched Antibody Pair, PBS Only. Capture antibody: 87372-3-PBS. Detection antibody: 87372-2-PBS. Standard: Ag4323. Range: 0.156-20 ng/mL.