

For Research Use Only

OTX2 Recombinant monoclonal antibody, PBS Only (Detector)

Catalog Number: 87372-2-PBS



Basic Information

Catalog Number: 87372-2-PBS	GenBank Accession Number: BC032579	Purification Method: Protein A purification
Source: Rabbit	GeneID (NCBI): 5015	CloneNo.: 252762G4
Isotype: IgG	UNIPROT ID: P32243	
Immunogen Catalog Number: AG4323	Full Name: orthodenticle homeobox 2	
	Calculated MW: 297 aa, 32 kDa	

Applications

Tested Applications:
Cytometric bead array, Indirect ELISA

Species Specificity:
human

Background Information

Storage

Storage:
Store at -80°C.
The product is shipped with ice packs. Upon receipt, store it immediately at -80°C

Storage Buffer:
PBS only, pH7.3

For technical support and original validation data for this product please contact:

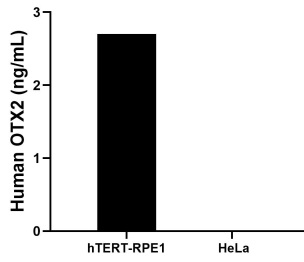
T: 4006900926

E: Proteintech-CN@ptglab.com

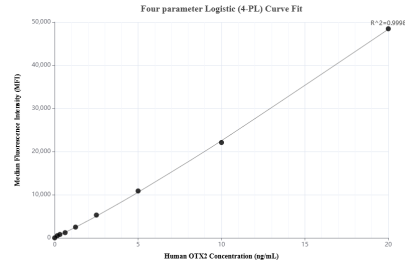
W: ptgcn.com

This product is exclusively available under Proteintech Group brand and is not available to purchase from any other manufacturer.

Selected Validation Data



The mean OTX2 concentration was determined to be 2.7 ng/mL in hTERT-RPE1 cell extract based on a 1.3 mg/mL extract load, HeLa cell extract were served as a negative control.



Cytometric bead array standard curve of MP02987-1, OTX2 Recombinant Matched Antibody Pair, PBS Only. Capture antibody: 87372-3-PBS. Detection antibody: 87372-2-PBS. Standard: Ag4323. Range: 0.156-20 ng/mL.