

For Research Use Only

EPHA1 Recombinant monoclonal antibody

Catalog Number:87362-1-RR



Basic Information

Catalog Number: 87362-1-RR	GenBank Accession Number: NM_005232.4	Purification Method: Protein A purification
Source: Rabbit	GeneID (NCBI): 2041	CloneNo.: 252393D10
Isotype: IgG	UNIPROT ID: P21709-1	Recommended Dilutions: WB: 1:2000-1:10000
Immunogen Catalog Number: EG5474	Full Name: EPH receptor A1	
	Calculated MW: 108 kDa	
	Observed MW: 120-125 kDa	

Applications

Tested Applications: WB, ELISA	Positive Controls: WB : HepG2 cells, HT-29 cells
Species Specificity: human	

Background Information

EPHA1, also named as EPH, EPHT and EPHT1, belongs to ephrin receptor subfamily of the protein-tyrosine kinase family. EPH and EPH-related receptors have been implicated in mediating developmental events, particularly in the nervous system. Receptors in the EPH subfamily typically have a single kinase domain and an extracellular region containing a Cys-rich domain and 2 fibronectin type III repeats. Ligands in the ephrin-A subclass, including the prototype family member ephrin-A1 (B61), are membrane associated through glycosylphosphatidyl-inositol linkages, whereas ephrin-B subclass consists of ligands with transmembrane domains. The general role of the Eph family is in mediating repulsive cell-cell interaction.

Storage

Storage:
Store at -20°C. Stable for one year after shipment.
Storage Buffer:
PBS with 0.02% sodium azide and 50% glycerol, pH7.3
Aliquoting is unnecessary for -20°C storage

For technical support and original validation data for this product please contact:

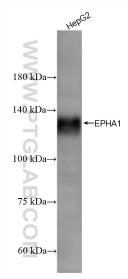
T: 4006900926

E: Proteintech-CN@ptglab.com

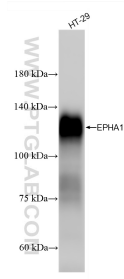
W: ptgcn.com

This product is exclusively available under Proteintech Group brand and is not available to purchase from any other manufacturer.

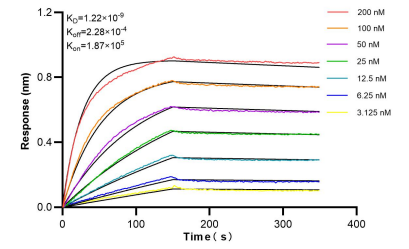
Selected Validation Data



HepG2 cells were subjected to SDS PAGE followed by western blot with 87362-1-RR (EPHA1 antibody) at dilution of 1:5000 incubated at room temperature for 1.5 hours.



HT-29 cells were subjected to SDS PAGE followed by western blot with 87362-1-RR (EPHA1 antibody) at dilution of 1:5000 incubated at room temperature for 1.5 hours.



Biolayer interferometry (BLI) kinetic assays of 87362-1-RR against Human EPHA1 were performed. The affinity constant is 1.22 nM.