

For Research Use Only

EPHA1 Recombinant monoclonal antibody, PBS Only

Catalog Number: 87362-1-PBS



Basic Information

Catalog Number: 87362-1-PBS	GenBank Accession Number: NM_005232.4	Purification Method: Protein A purification
Source: Rabbit	GeneID (NCBI): 2041	CloneNo.: 252393D10
Isotype: IgG	UNIPROT ID: P21709-1	
Immunogen Catalog Number: EG5474	Full Name: EPH receptor A1	
	Calculated MW: 108 kDa	
	Observed MW: 120-125 kDa	

Applications

Tested Applications:
WB, Indirect ELISA

Species Specificity:
human

Background Information

EPHA1, also named as EPH, EPHT and EPHT1, belongs to ephrin receptor subfamily of the protein-tyrosine kinase family. EPH and EPH-related receptors have been implicated in mediating developmental events, particularly in the nervous system. Receptors in the EPH subfamily typically have a single kinase domain and an extracellular region containing a Cys-rich domain and 2 fibronectin type III repeats. Ligands in the ephrin-A subclass, including the prototype family member ephrin-A1 (B61), are membrane associated through glycosylphosphatidyl-inositol linkages, whereas ephrin-B subclass consists of ligands with transmembrane domains. The general role of the Eph family is in mediating repulsive cell-cell interaction.

Storage

Storage:
Store at -80°C.
The product is shipped with ice packs. Upon receipt, store it immediately at -80°C

Storage Buffer:
PBS only, pH7.3

For technical support and original validation data for this product please contact:

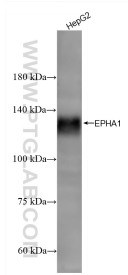
T: 4006900926

E: Proteintech-CN@ptglab.com

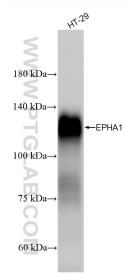
W: ptgcn.com

This product is exclusively available under Proteintech Group brand and is not available to purchase from any other manufacturer.

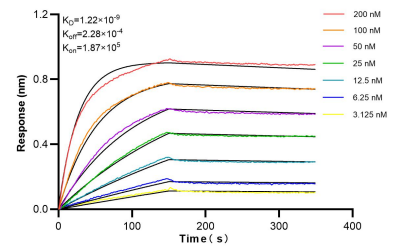
Selected Validation Data



HepG2 cells were subjected to SDS PAGE followed by western blot with 87362-1-RR (EPHA1 antibody) at dilution of 1:5000 incubated at room temperature for 1.5 hours. This data was developed using the same antibody clone with 87362-1-PBS in a different storage buffer formulation.



HT-29 cells were subjected to SDS PAGE followed by western blot with 87362-1-RR (EPHA1 antibody) at dilution of 1:5000 incubated at room temperature for 1.5 hours. This data was developed using the same antibody clone with 87362-1-PBS in a different storage buffer formulation.



Biolayer interferometry (BLI) kinetic assays of 87362-1-RR against Human EPHA1 were performed. The affinity constant is 1.22 nM.