

For Research Use Only

# Mouse Gpr15 Recombinant monoclonal antibody, PBS Only (Detector)

Catalog Number: 87359-2-PBS



## Basic Information

Catalog Number:

87359-2-PBS

Source:

Rabbit

Isotype:

IgG

GenBank Accession Number:

BC119518

GeneID (NCBI):

71223

UNIPROT ID:

Q0VDU3

Full Name:

G protein-coupled receptor 15

Purification Method:

Protein A purification

CloneNo.:

252257F3

## Applications

Tested Applications:

Cytometric bead array, Indirect ELISA

Species Specificity:

mouse

## Background Information

### Storage

Storage:

Store at -80°C.

**The product is shipped with ice packs. Upon receipt, store it immediately at -80°C**

Storage Buffer:

PBS only, pH7.3

For technical support and original validation data for this product please contact:

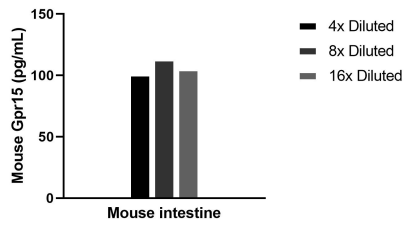
T: 4006900926

E: [Proteintech-CN@ptglab.com](mailto:Proteintech-CN@ptglab.com)

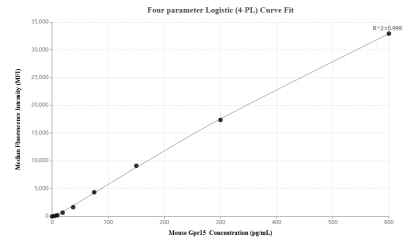
W: [ptgcn.com](http://ptgcn.com)

**This product is exclusively available under Proteintech Group brand and is not available to purchase from any other manufacturer.**

## Selected Validation Data



The mean Gpr15 concentration was determined to be 106.1 pg/mL in Mouse intestine tissue extract based on a 4.9 mg/mL extract load.



Cytometric bead array standard curve of MP02986-1, MOUSE Gpr15 Recombinant Matched Antibody Pair, PBS Only. Capture antibody: 87359-3-PBS. Detection antibody: 87359-2-PBS. Standard: SY02745. Range: 4.69-600 pg/mL.