

For Research Use Only

Phospho-Lamin A/C (Ser22) Recombinant monoclonal antibody

Catalog Number: 87346-1-RR



Basic Information

Catalog Number:

87346-1-RR

Source:

Rabbit

Isotype:

IgG

GenBank Accession Number:

NM_170707

GeneID (NCBI):

4000

ENSEMBL Gene ID:

ENSG00000160789

UNIPROT ID:

P02545

Full Name:

lamin A/C

Calculated MW:

65 kDa

Observed MW:

65 kDa, 70 kDa

Purification Method:

Protein A purification

CloneNo.:

252663H8

Recommended Dilutions:

WB: 1:5000-1:50000

IHC: 1:500-1:2000

Applications

Tested Applications:

WB, IHC, ELISA

Species Specificity:

human

Note-IHC: suggested antigen retrieval with TE buffer pH 9.0; (*) Alternatively, antigen retrieval may be performed with citrate buffer pH 6.0

Positive Controls:

WB: paclitaxel treated HeLa cells,

IHC: mouse colon tissue,

Background Information

Lamin A/C is also named as LMNA or LMN1. The lamin family of proteins make up the matrix and are highly conserved in evolution. Phospho-Lamin A/C (Ser22) is a phosphorylated form of Lamin A/C, which is a protein that plays a crucial role in the structure and function of the nuclear lamina. Lamin A/C phosphorylation is predicted to have regulatory consequences.

Storage

Storage:

Store at -20°C. Stable for one year after shipment.

Storage Buffer:

PBS with 0.02% sodium azide and 50% glycerol, pH7.3

Aliquoting is unnecessary for -20°C storage

For technical support and original validation data for this product please contact:

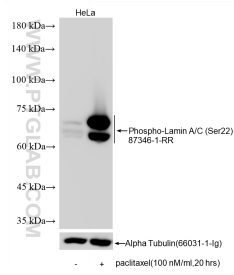
T: 4006900926

E: Proteintech-CN@ptglab.com

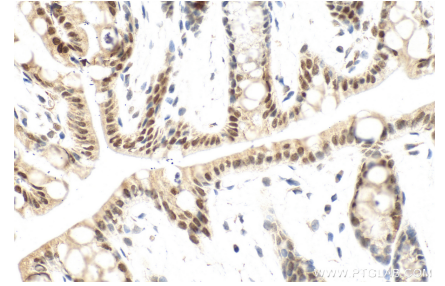
W: ptgcn.com

This product is exclusively available under Proteintech Group brand and is not available to purchase from any other manufacturer.

Selected Validation Data



Non-treated HeLa cells and paclitaxel treated HeLa cells were subjected to SDS PAGE followed by western blot with 87346-1-RR (Phospho-Lamin A/C (Ser22) antibody) at dilution of 1:10000 incubated at room temperature for 1.5 hours. The membrane was stripped and re-blotted with Alpha Tubulin (66031-1-Ig) antibody as a loading control.



Immunohistochemical analysis of paraffin-embedded mouse colon tissue slide using 87346-1-RR (Phospho-Lamin A/C (Ser22) antibody) at dilution of 1:1000 (under 10x lens). Heat mediated antigen retrieval with Tris-EDTA buffer (pH 9.0).

Immunohistochemical analysis of paraffin-embedded mouse colon tissue slide using 87346-1-RR (Phospho-Lamin A/C (Ser22) antibody) at dilution of 1:1000 (under 40x lens). Heat mediated antigen retrieval with Tris-EDTA buffer (pH 9.0).