

For Research Use Only

# SPATA6 Recombinant monoclonal antibody, PBS Only

Catalog Number: 87341-1-PBS



## Basic Information

<b>Catalog Number:</b> 87341-1-PBS	<b>GenBank Accession Number:</b> BC020660	<b>Purification Method:</b> Protein A purification
<b>Source:</b> Rabbit	<b>GeneID (NCBI):</b> 54558	<b>CloneNo.:</b> 252546E7
<b>Isotype:</b> IgG	<b>UNIPROT ID:</b> Q9NWH7	
<b>Immunogen Catalog Number:</b> AG41247	<b>Full Name:</b> spermatogenesis associated 6	
	<b>Calculated MW:</b> 472 aa, 54 kDa	
	<b>Observed MW:</b> 54-60 kDa	

## Applications

**Tested Applications:**  
WB, Indirect ELISA

**Species Specificity:**  
human, mouse

## Background Information

Spermatogenesis-associated protein 6 (SPATA6) is a testis-enriched protein crucial for spermatogenesis and male fertility. It localizes to the sperm head-tail coupling apparatus (HTCA) and is crucial for the proper assembly of the sperm connecting piece and tight head-tail conjunction. SPATA6 is a core structural component of the sperm fibrous sheath (FS), a cytoskeletal structure in the principal piece of the sperm flagellum essential for normal sperm motility. Mutations in SPATA6 can lead to acephalic spermatozoa and male infertility (PMID: 38454159, PMID: 41058548).

## Storage

**Storage:**  
Store at -80°C.  
**The product is shipped with ice packs. Upon receipt, store it immediately at -80°C**

**Storage Buffer:**  
PBS only, pH7.3

For technical support and original validation data for this product please contact:

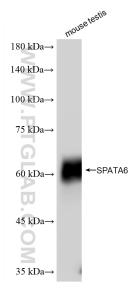
T: 4006900926

E: [Proteintech-CN@ptglab.com](mailto:Proteintech-CN@ptglab.com)

W: [ptgcn.com](http://ptgcn.com)

**This product is exclusively available under Proteintech Group brand and is not available to purchase from any other manufacturer.**

## Selected Validation Data



Mouse testis tissue were subjected to SDS PAGE followed by western blot with 87341-1-RR (SPATA6 antibody) at dilution of 1:10000 incubated at room temperature for 1.5 hours. This data was developed using the same antibody clone with 87341-1-PBS in a different storage buffer formulation.