

For Research Use Only

TMEM201 Recombinant monoclonal antibody

Catalog Number: 87333-1-RR



Basic Information

Catalog Number: 87333-1-RR	GenBank Accession Number: BC137291	Purification Method: Protein A purification
Source: Rabbit	GeneID (NCBI): 199953	CloneNo.: 252547D10
Isotype: IgG	UNIPROT ID: Q55NT2	Recommended Dilutions: WB: 1:5000-1:50000 IF/ICC: 1:250-1:1000
Immunogen Catalog Number: AG21360	Full Name: transmembrane protein 201	
	Calculated MW: 666 aa, 72 kDa	
	Observed MW: 43 kDa and 72 kDa	

Applications

Tested Applications: WB, IF/ICC, ELISA	Positive Controls:
Species Specificity: human, mouse	WB : HUVEC cells, mouse brain tissue, U2OS cells, mouse heart tissue
	IF/ICC : U2OS cells, HeLa cells

Background Information

TMEM201, also known as SAMP1 and NET5, is a member of the TMEM201 family. TMEM201 is a nuclear envelope transmembrane protein primarily localized to the inner nuclear membrane. It plays a crucial role in nuclear envelope architecture and is a component of the linker of nucleoskeleton and cytoskeleton (LINC) complex. TMEM201 is essential for proper nuclear division and nuclear membrane reorganization during mitosis (PMID: 35311970, PMID: 35311970). TMEM201 has two isoforms with the molecular weights of 43 kDa and 72 kDa, respectively.

Storage

Storage:
Store at -20°C. Stable for one year after shipment.
Storage Buffer:
PBS with 0.02% sodium azide and 50% glycerol, pH7.3
Aliquoting is unnecessary for -20°C storage

For technical support and original validation data for this product please contact:

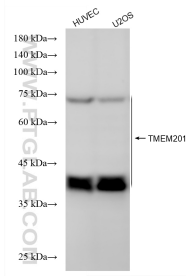
T: 4006900926

E: Proteintech-CN@ptglab.com

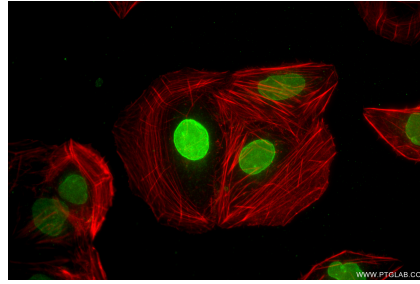
W: ptgcn.com

This product is exclusively available under Proteintech Group brand and is not available to purchase from any other manufacturer.

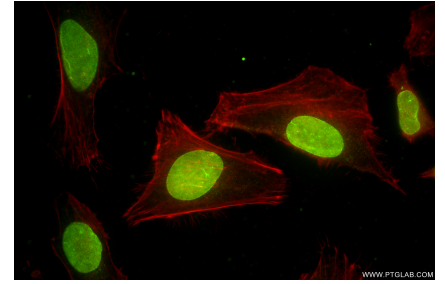
Selected Validation Data



Various lysates were subjected to SDS PAGE followed by western blot with 87333-1-RR (TMEM201 antibody) at dilution of 1:10000 incubated at room temperature for 1.5 hours.



Immunofluorescent analysis of (4% PFA) fixed U2OS cells using TMEM201 antibody (87333-1-RR, Clone: 252547D10) at dilution of 1:500 and Coralite® 488-Conjugated Goat Anti-Rabbit IgG(H+L) (SA00013-2), CL594-Phalloidin (red).



Immunofluorescent analysis of (4% PFA) fixed HeLa cells using TMEM201 antibody (87333-1-RR, Clone: 252547D10) at dilution of 1:500 and Coralite® 488-Conjugated Goat Anti-Rabbit IgG(H+L) (SA00013-2), CL594-Phalloidin (red).