

For Research Use Only

# TLE1 Recombinant monoclonal antibody

Catalog Number: 87332-1-RR



## Basic Information

<b>Catalog Number:</b> 87332-1-RR	<b>GenBank Accession Number:</b> BC010100	<b>Purification Method:</b> Protein A purification
<b>Source:</b> Rabbit	<b>GeneID (NCBI):</b> 7088	<b>CloneNo.:</b> 252574H3
<b>Isotype:</b> IgG	<b>UNIPROT ID:</b> Q04724	<b>Recommended Dilutions:</b> WB: 1:1000-1:6000
<b>Immunogen Catalog Number:</b> AG17299	<b>Full Name:</b> transducin-like enhancer of split 1 (E(sp1) homolog, Drosophila)	
	<b>Calculated MW:</b> 770 aa, 83 kDa	
	<b>Observed MW:</b> 80-95 kDa	

## Applications

<b>Tested Applications:</b> WB, ELISA	<b>Positive Controls:</b> WB : HEK-293 cells, Jurkat cells, mouse lung tissue, A549 cells, HepG2 cells
<b>Species Specificity:</b> human, mouse	

## Background Information

TLE1 (Transducin-like enhancer protein 1) is a transcriptional corepressor and binds to a number of transcription factors. It can inhibit NF-kappa-B-regulated gene expression and the transcriptional activation mediated by FOXA2, and by CTNNB1 and TCF family members in Wnt signaling. The effects of full-length TLE family members may be modulated by association with dominant-negative AES (PMID: 10660609). TLE1 is highly expressed in postnatal brain (PMID: 29758293; 27852056).

## Storage

**Storage:**  
Store at -20°C. Stable for one year after shipment.  
**Storage Buffer:**  
PBS with 0.02% sodium azide and 50% glycerol, pH7.3  
Aliquoting is unnecessary for -20°C storage

For technical support and original validation data for this product please contact:

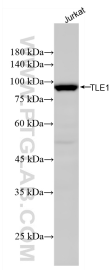
T: 4006900926

E: [Proteintech-CN@ptglab.com](mailto:Proteintech-CN@ptglab.com)

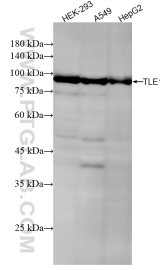
W: [ptgcn.com](http://ptgcn.com)

This product is exclusively available under Proteintech Group brand and is not available to purchase from any other manufacturer.

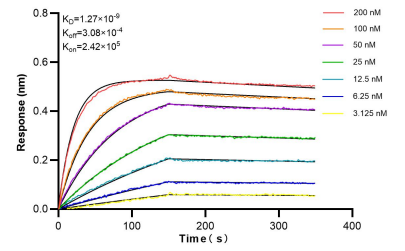
## Selected Validation Data



Jurkat cells were subjected to SDS PAGE followed by western blot with 87332-1-RR (TLE1 antibody) at dilution of 1:3000 incubated at room temperature for 1.5 hours.



Various lysates were subjected to SDS PAGE followed by western blot with 87332-1-RR (TLE1 antibody) at dilution of 1:3000 incubated at room temperature for 1.5 hours.



Biolayer interferometry (BLI) kinetic assays of 87332-1-RR against Human TLE1 were performed. The affinity constant is 1.29 nM.