

For Research Use Only

TLE1 Recombinant monoclonal antibody, PBS Only

Catalog Number: 87332-1-PBS



Basic Information

Catalog Number: 87332-1-PBS	GenBank Accession Number: BC010100	Purification Method: Protein A purification
Source: Rabbit	GeneID (NCBI): 7088	CloneNo.: 252574H3
Isotype: IgG	UNIPROT ID: Q04724	
Immunogen Catalog Number: AG17299	Full Name: transducin-like enhancer of split 1 (E(sp1) homolog, Drosophila)	
	Calculated MW: 770 aa, 83 kDa	
	Observed MW: 80-95 kDa	

Applications

Tested Applications:
WB, Indirect ELISA

Species Specificity:
human, mouse

Background Information

TLE1 (Transducin-like enhancer protein 1) is a transcriptional corepressor and binds to a number of transcription factors. It can inhibit NF-kappa-B-regulated gene expression and the transcriptional activation mediated by FOXA2, and by CTNNB1 and TCF family members in Wnt signaling. The effects of full-length TLE family members may be modulated by association with dominant-negative AES (PMID: 10660609). TLE1 is highly expressed in postnatal brain (PMID: 29758293; 27852056).

Storage

Storage:
Store at -80°C.
The product is shipped with ice packs. Upon receipt, store it immediately at -80°C

Storage Buffer:
PBS only, pH7.3

For technical support and original validation data for this product please contact:

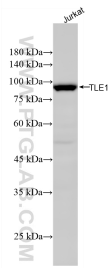
T: 4006900926

E: Proteintech-CN@ptglab.com

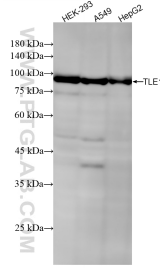
W: ptgcn.com

This product is exclusively available under Proteintech Group brand and is not available to purchase from any other manufacturer.

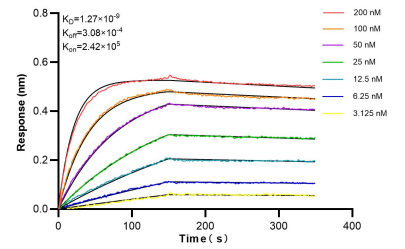
Selected Validation Data



Jurkat cells were subjected to SDS PAGE followed by western blot with 87332-1-RR (TLE1 antibody) at dilution of 1:3000 incubated at room temperature for 1.5 hours. This data was developed using the same antibody clone with 87332-1-PBS in a different storage buffer formulation.



Various lysates were subjected to SDS PAGE followed by western blot with 87332-1-RR (TLE1 antibody) at dilution of 1:3000 incubated at room temperature for 1.5 hours. This data was developed using the same antibody clone with 87332-1-PBS in a different storage buffer formulation.



Biolayer interferometry (BLI) kinetic assays of 87332-1-RR against Human TLE1 were performed. The affinity constant is 1.29 nM.