

For Research Use Only

# SPC25 Recombinant monoclonal antibody

Catalog Number: 87323-1-RR



## Basic Information

<b>Catalog Number:</b> 87323-1-RR	<b>GenBank Accession Number:</b> BC022255	<b>Purification Method:</b> Protein A purification
<b>Source:</b> Rabbit	<b>GeneID (NCBI):</b> 57405	<b>CloneNo.:</b> 252476G7
<b>Isotype:</b> IgG	<b>UNIPROT ID:</b> Q9HBM1	<b>Recommended Dilutions:</b> WB: 1:5000-1:50000
<b>Immunogen Catalog Number:</b> AG23985	<b>Full Name:</b> SPC25, NDC80 kinetochore complex component, homolog (S. cerevisiae)	
	<b>Observed MW:</b> 26 kDa	

## Applications

<b>Tested Applications:</b> WB, ELISA	<b>Positive Controls:</b>
<b>Species Specificity:</b> human	<b>WB:</b> HeLa cells, HepG2 cells, HEK-293T cells, Jurkat cells, SKOV-3 cells, THP-1 cells

## Background Information

Spindle Pole Body Component 25 (SPC25), a core subunit of the NDC80 kinetochore complex, is essential for accurate chromosome alignment and segregation during mitosis. By linking microtubules to kinetochores, SPC25 ensures proper attachment and tension generation, critical for the maintenance of genomic stability. SPC25 is largely found in the cytoplasm and nucleus. The NDC80 complex, which is involved in kinetochore-microtubule interactions and spindle assembly checkpoint activity, is composed of four subunits: SPC24, SPC25, NDC80, and NUF2. (PMID: 40587622, PMID: 40400636)

## Storage

**Storage:**  
Store at -20°C. Stable for one year after shipment.  
**Storage Buffer:**  
PBS with 0.02% sodium azide and 50% glycerol, pH7.3  
**Aliquoting is unnecessary for -20°C storage**

For technical support and original validation data for this product please contact:

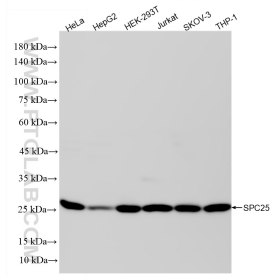
T: 4006900926

E: [Proteintech-CN@ptglab.com](mailto:Proteintech-CN@ptglab.com)

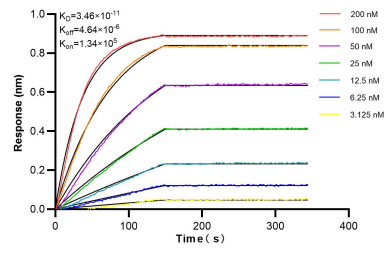
W: [ptgcn.com](http://ptgcn.com)

**This product is exclusively available under Proteintech Group brand and is not available to purchase from any other manufacturer.**

## Selected Validation Data



Various lysates were subjected to SDS PAGE followed by western blot with 87323-1-RR (SPC25 antibody) at dilution of 1:20000 incubated at room temperature for 1.5 hours.



Biolayer interferometry (BLI) kinetic assays of 87323-1-RR against Human SPC25 were performed. The affinity constant is 34.6 pM.