

For Research Use Only

SPC25 Recombinant monoclonal antibody, PBS Only

Catalog Number: 87323-1-PBS



Basic Information

Catalog Number: 87323-1-PBS	GenBank Accession Number: BC022255	Purification Method: Protein A purification
Source: Rabbit	GeneID (NCBI): 57405	CloneNo.: 252476G7
Isotype: IgG	UNIPROT ID: Q9HBM1	
Immunogen Catalog Number: AG23985	Full Name: SPC25, NDC80 kinetochore complex component, homolog (S. cerevisiae)	
	Observed MW: 26 kDa	

Applications

Tested Applications:
WB, Indirect ELISA

Species Specificity:
human

Background Information

Spindle Pole Body Component 25 (SPC25), a core subunit of the NDC80 kinetochore complex, is essential for accurate chromosome alignment and segregation during mitosis. By linking microtubules to kinetochores, SPC25 ensures proper attachment and tension generation, critical for the maintenance of genomic stability. SPC25 is largely found in the cytoplasm and nucleus. The NDC80 complex, which is involved in kinetochore-microtubule interactions and spindle assembly checkpoint activity, is composed of four subunits: SPC24, SPC25, NDC80, and NUF2. (PMID: 40587622, PMID: 40400636)

Storage

Storage:
Store at -80°C.
The product is shipped with ice packs. Upon receipt, store it immediately at -80°C

Storage Buffer:
PBS only, pH7.3

For technical support and original validation data for this product please contact:

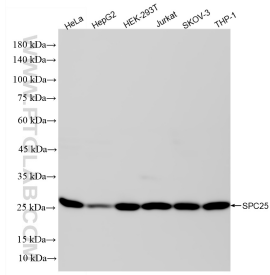
T: 4006900926

E: Proteintech-CN@ptglab.com

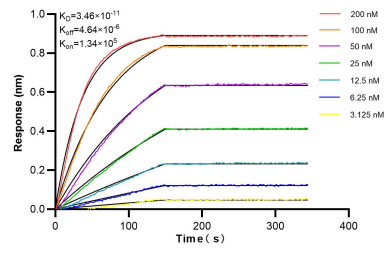
W: ptgcn.com

This product is exclusively available under Proteintech Group brand and is not available to purchase from any other manufacturer.

Selected Validation Data



Various lysates were subjected to SDS PAGE followed by western blot with 87323-1-RR (SPC25 antibody) at dilution of 1:20000 incubated at room temperature for 1.5 hours. This data was developed using the same antibody clone with 87323-1-PBS in a different storage buffer formulation.



Biolayer interferometry (BLI) kinetic assays of 87323-1-RR against Human SPC25 were performed. The affinity constant is 34.6 pM.