

For Research Use Only

# IFNW1 Recombinant monoclonal antibody, PBS Only (Capture)

Catalog Number: 87318-3-PBS



## Basic Information

<b>Catalog Number:</b> 87318-3-PBS	<b>GenBank Accession Number:</b> BC117292	<b>Purification Method:</b> Protein A purification
<b>Source:</b> Rabbit	<b>GeneID (NCBI):</b> 3467	<b>CloneNo.:</b> 251487C12
<b>Isotype:</b> IgG	<b>UNIPROT ID:</b> P05000	
<b>Immunogen Catalog Number:</b> EG5386	<b>Full Name:</b> interferon, omega 1	
	<b>Calculated MW:</b> 22 kDa	

## Applications

**Tested Applications:**  
Sandwich ELISA, Indirect ELISA

**Species Specificity:**  
human

## Background Information

### Storage

**Storage:**  
Store at -80°C.  
**The product is shipped with ice packs. Upon receipt, store it immediately at -80°C**

**Storage Buffer:**  
PBS only, pH7.3

For technical support and original validation data for this product please contact:

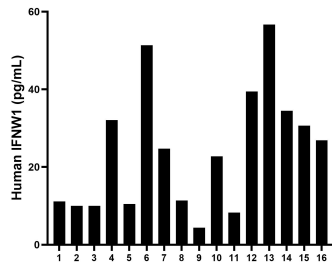
T: 4006900926

E: [Proteintech-CN@ptglab.com](mailto:Proteintech-CN@ptglab.com)

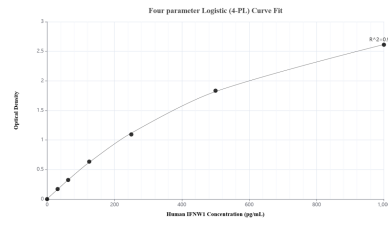
W: [ptgcn.com](http://ptgcn.com)

**This product is exclusively available under Proteintech Group brand and is not available to purchase from any other manufacturer.**

## Selected Validation Data



Plasma of sixteen individual healthy human donors was measured. The IFNWI concentration of detected samples was determined to be 24.1 pg/mL with a range of 4.4-56.7 pg/mL.



Sandwich ELISA standard curve of MP03285-1, Human IFNWI Recombinant Matched Antibody Pair - PBS only. 87318-3-PBS was coated to a plate as the capture antibody and incubated with serial dilutions of standard Eg5386. 87318-2-PBS was HRP conjugated as the detection antibody. Range: 31.3-1000 pg/mL.