

For Research Use Only

Annexin A1 Recombinant monoclonal antibody

Catalog Number:87316-3-RR



Basic Information

Catalog Number:

87316-3-RR

Source:

Rabbit

Isotype:

IgG

Immunogen Catalog Number:

EG4503

GenBank Accession Number:

NM_000700.3

GeneID (NCBI):

301

UNIPROT ID:

P04083

Full Name:

annexin A1

Calculated MW:

39kDa

Observed MW:

35-39 kDa

Purification Method:

Protein A purification

CloneNo.:

251332C6

Recommended Dilutions:

WB: 1:5000-1:50000

Applications

Tested Applications:

WB, ELISA

Species Specificity:

human, mouse, rat

Positive Controls:

WB : HeLa cells, HepG2 cells, K-562 cells, A549 cells, NIH/3T3 cells, C6 cells

Background Information

Annexin A1 (ANXA1), also named as ANX1, LPC1 and p35, belongs to the annexin family. It is a member of the annexin family of Ca²⁺-binding and phospholipidbinding proteins, and it is particularly abundant in various populations of peripheral blood leukocytes. ANXA1 regulates phospholipase A2 activity. It seems to bind from two to four calcium ions with high affinity. ANXA1 is a pleiotropic protein produced by many cell types including peripheral blood leucocytes.

Storage

Storage:

Store at -20°C. Stable for one year after shipment.

Storage Buffer:

PBS with 0.02% sodium azide and 50% glycerol, pH7.3

Aliquoting is unnecessary for -20°C storage

For technical support and original validation data for this product please contact:

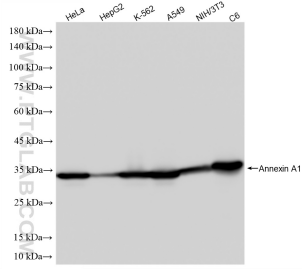
T: 4006900926

E: Proteintech-CN@ptglab.com

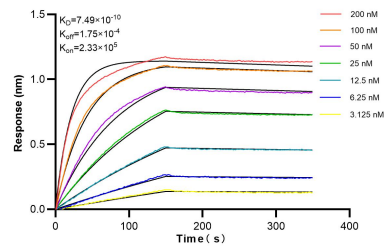
W: ptgcn.com

This product is exclusively available under Proteintech Group brand and is not available to purchase from any other manufacturer.

Selected Validation Data



Various lysates were subjected to SDS PAGE followed by western blot with 87316-3-RR (Annexin A1 antibody) at dilution of 1:10000 incubated at room temperature for 1.5 hours.



Biolayer interferometry (BLI) kinetic assays of 87316-3-RR against Human Annexin A1 were performed. The affinity constant is 0.749 nM.