

For Research Use Only

Annexin A1 Recombinant monoclonal antibody, PBS Only (Capture/Detector)

Catalog Number:87316-1-PBS



Basic Information

Catalog Number: 87316-1-PBS	GenBank Accession Number: NM_000700.3	Purification Method: Protein A purification
Source: Rabbit	GeneID (NCBI): 301	CloneNo.: 251332C11
Isotype: IgG	UNIPROT ID: P04083	
Immunogen Catalog Number: EG4503	Full Name: annexin A1	
	Calculated MW: 39kDa	

Applications

Tested Applications:
Cytometric bead array, Sandwich ELISA, Indirect ELISA

Species Specificity:
human

Background Information

Storage

Storage:
Store at -80°C.
The product is shipped with ice packs. Upon receipt, store it immediately at -80°C

Storage Buffer:
PBS only, pH7.3

For technical support and original validation data for this product please contact:

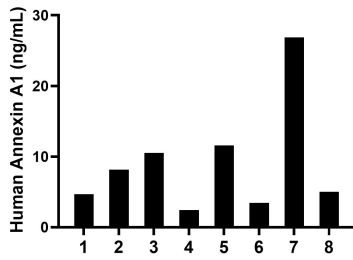
T: 4006900926

E: Proteintech-CN@ptglab.com

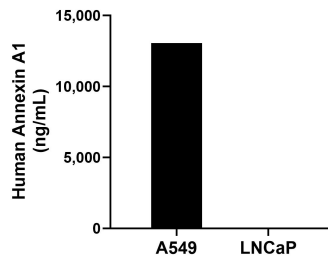
W: ptgcn.com

This product is exclusively available under Proteintech Group brand and is not available to purchase from any other manufacturer.

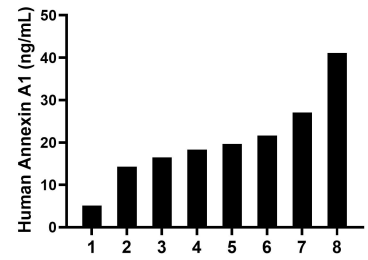
Selected Validation Data



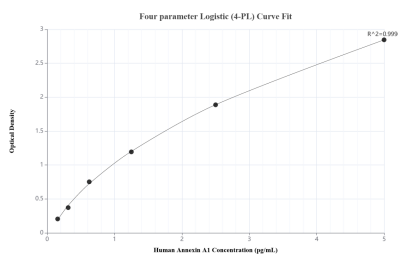
Serum of eight individual healthy human donors was measured. The Annexin A1 concentration of detected samples was determined to be 9.09 ng/mL with a range of 2.43-26.85 ng/mL.



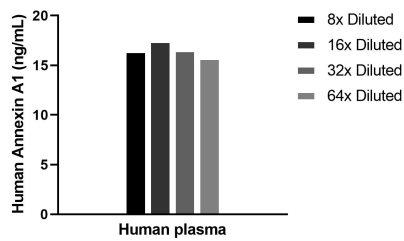
The mean Annexin A1 concentration was determined to be 13,051.00 ng/mL in A549 cell extract based on a 1.10 mg/mL extract load and 1.25 ng/mL in LNCaP cell extract based on a 1.20 mg/mL extract load.



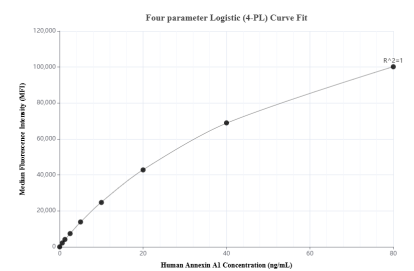
Plasma of eight individual healthy human donors was measured. The Annexin A1 concentration of detected samples was determined to be 20.45 ng/mL with a range of 5.09-41.09 ng/mL.



Sandwich ELISA standard curve of MP02960-2, Human Annexin A1 Recombinant Matched Antibody Pair - PBS only. 87316-1-PBS was coated to a plate as the capture antibody and incubated with serial dilutions of standard Eg4503. 87316-4-PBS was HRP conjugated as the detection antibody. Range: 0.156-5 ng/mL.



The mean Annexin A1 concentration was determined to be 16.8 ng/mL in Human plasma.



Cytometric bead array standard curve of MP02960-1, Annexin A1 Recombinant Matched Antibody Pair, PBS Only. Capture antibody: 87316-2-PBS. Detection antibody: 87316-1-PBS. Standard: Eg4503. Range: 0.625-80 ng/mL.