

For Research Use Only

# INPP5F Recombinant monoclonal antibody, PBS Only (Detector)

Catalog Number: 87311-1-PBS



## Basic Information

<b>Catalog Number:</b> 87311-1-PBS	<b>GenBank Accession Number:</b> BC111493	<b>Purification Method:</b> Protein A purification
<b>Source:</b> Rabbit	<b>GeneID (NCBI):</b> 22876	<b>CloneNo.:</b> 252661F2
<b>Isotype:</b> IgG	<b>UNIPROT ID:</b> Q9Y2H2	
<b>Immunogen Catalog Number:</b> AG39933	<b>Full Name:</b> inositol polyphosphate-5-phosphatase F	
	<b>Calculated MW:</b> 1132 aa, 128 kDa	
	<b>Observed MW:</b> 128-140 kDa	

## Applications

**Tested Applications:**  
WB, Sandwich ELISA, Indirect ELISA

**Species Specificity:**  
human, mouse, rat

## Background Information

INPP5F can negatively regulate STAT3 signaling pathway through inhibition of STAT3 phosphorylation and translocation to the nucleus.

## Storage

**Storage:**  
Store at -80°C.  
**The product is shipped with ice packs. Upon receipt, store it immediately at -80°C**

**Storage Buffer:**  
PBS only, pH7.3

For technical support and original validation data for this product please contact:

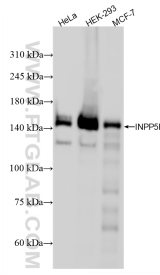
T: 4006900926

E: [Proteintech-CN@ptglab.com](mailto:Proteintech-CN@ptglab.com)

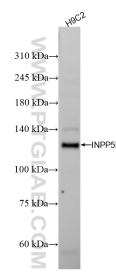
W: [ptgcn.com](http://ptgcn.com)

**This product is exclusively available under Proteintech Group brand and is not available to purchase from any other manufacturer.**

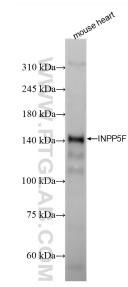
## Selected Validation Data



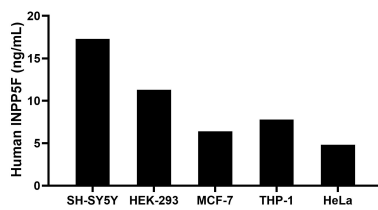
Various lysates were subjected to SDS PAGE followed by western blot with 87311-1-RR (INPP5F antibody) at dilution of 1:2000 incubated at room temperature for 1.5 hours. This data was developed using the same antibody clone with 87311-1-PBS in a different storage buffer formulation.



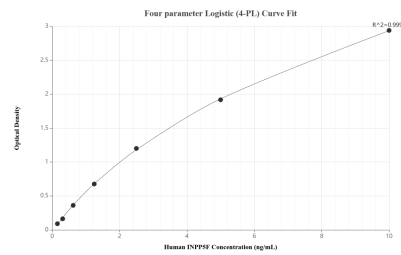
Various lysates were subjected to SDS PAGE followed by western blot with 87311-1-RR (INPP5F antibody) at dilution of 1:2000 incubated at room temperature for 1.5 hours. This data was developed using the same antibody clone with 87311-1-PBS in a different storage buffer formulation.



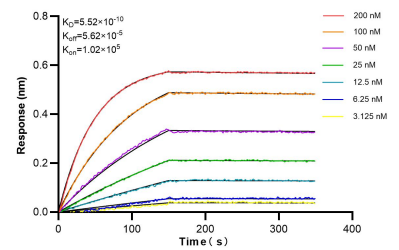
Various lysates were subjected to SDS PAGE followed by western blot with 87311-1-RR (INPP5F antibody) at dilution of 1:2000 incubated at room temperature for 1.5 hours. This data was developed using the same antibody clone with 87311-1-PBS in a different storage buffer formulation.



The mean INPP5F concentration was determined to be 17.30 ng/mL in SH-SY5Y cell extract based on a 1.20 mg/mL extract load, 11.30 ng/mL in HEK-293 cell extract based on a 1.20 mg/mL extract load, 6.40 ng/mL in MCF-7 cell extract based on a 1.20 mg/mL extract load, 7.80 ng/mL in THP-1 cell extract based on a 1.20 mg/mL extract load, and 4.80 ng/mL in HeLa cell extract based on a 1.20 mg/mL extract load.



Sandwich ELISA standard curve of MP02978-2, Human INPP5F Recombinant Matched Antibody Pair - PBS only. 87311-4-PBS was coated to a plate as the capture antibody and incubated with serial dilutions of standard Ag39933. 87311-1-PBS was HRP conjugated as the detection antibody. Range: 0.156-10 ng/mL.



Bi-layer interferometry (BLI) kinetic assays of 87311-1-RR against Human INPP5F were performed. The affinity constant is 0.552 nM.