

For Research Use Only

# Phospho-KAP1 (Ser824) Recombinant monoclonal antibody

Catalog Number:87309-1-RR



## Basic Information

<b>Catalog Number:</b> 87309-1-RR	<b>GenBank Accession Number:</b> NM_005762	<b>Purification Method:</b> Protein A purification
<b>Source:</b> Rabbit	<b>GeneID (NCBI):</b> 10155	<b>CloneNo.:</b> 252561H1
<b>Isotype:</b> IgG	<b>UNIPROT ID:</b> Q13263	<b>Recommended Dilutions:</b> WB: 1:1000-1:6000 IF/ICC: 1:250-1:1000
	<b>Full Name:</b> tripartite motif-containing 28	
	<b>Calculated MW:</b> 89 kDa	
	<b>Observed MW:</b> 110 kDa	

## Applications

<b>Tested Applications:</b> WB, IF/ICC, ELISA	<b>Positive Controls:</b> WB : etoposide treated NIH/3T3 cells, IF/ICC : NIH/3T3 cells, etoposide treated NIH/3T3 cells
<b>Species Specificity:</b> human, mouse	

## Background Information

KAP1, also named as TRIM28 or RNF96, is a 835 amino acid protein, which contain one RING-type zinc finger, one PHD-type zinc finger, one bromo domain and two B box-type zinc fingers. Phospho-KAP1 (Ser824) refers to the phosphorylated form of KAP1 (KRAB-associated protein 1) at Serine 824. This post-translational modification plays a significant role in the regulation of gene expression and chromatin structure.

## Storage

**Storage:**  
Store at -20°C. Stable for one year after shipment.  
**Storage Buffer:**  
PBS with 0.02% sodium azide and 50% glycerol, pH7.3  
Aliquoting is unnecessary for -20°C storage

For technical support and original validation data for this product please contact:

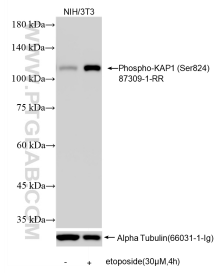
T: 4006900926

E: Proteintech-CN@ptglab.com

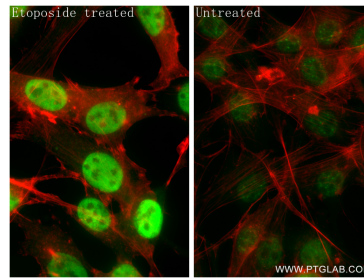
W: ptgcn.com

This product is exclusively available under Proteintech Group brand and is not available to purchase from any other manufacturer.

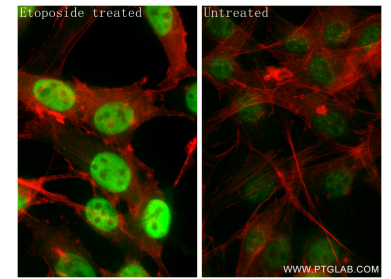
## Selected Validation Data



Non-treated NIH/3T3 cells and etoposide treated NIH/3T3 cells were subjected to SDS PAGE followed by western blot with 87309-1-RR (Phospho-KAP1 (Ser824) antibody) at dilution of 1:3000 incubated at room temperature for 1.5 hours. The membrane was stripped and re-blotted with Alpha Tubulin (66031-1-Ig) antibody as a loading control.



Immunofluorescent analysis of (4% PFA) fixed etoposide treated NIH/3T3 cells using Phospho-KAP1 (Ser824) antibody (87309-1-RR, Clone: 252561H1) at dilution of 1:500 and CoraLite@488-Conjugated Goat Anti-Rabbit IgG(H+L) (SA00013-2), CL594-Phalloidin (red).



Immunofluorescent analysis of (4% PFA) fixed NIH/3T3 cells using Phospho-KAP1 (Ser824) antibody (87309-1-RR, Clone: 252561H1) at dilution of 1:500 and CoraLite@488-Conjugated Goat Anti-Rabbit IgG(H+L) (SA00013-2), CL594-Phalloidin (red).