

For Research Use Only

# Phospho-KAP1 (Ser824) Recombinant monoclonal antibody, PBS Only

Catalog Number:87309-1-PBS



## Basic Information

Catalog Number:

87309-1-PBS

Source:

Rabbit

Isotype:

IgG

GenBank Accession Number:

NM\_005762

GeneID (NCBI):

10155

UNIPROT ID:

Q13263

Full Name:

tripartite motif-containing 28

Calculated MW:

89 kDa

Observed MW:

110 kDa

Purification Method:

Protein A purification

CloneNo.:

252561H1

## Applications

Tested Applications:

WB, IF/ICC, Indirect ELISA

Species Specificity:

human, mouse

## Background Information

KAP1, also named as TRIM28 or RNF96, is a 835 amino acid protein, which contain one RING-type zinc finger, one PHD-type zinc finger, one bromo domain and two B box-type zinc fingers. Phospho-KAP1 (Ser824) refers to the phosphorylated form of KAP1 (KRAB-associated protein 1) at Serine 824. This post-translational modification plays a significant role in the regulation of gene expression and chromatin structure.

## Storage

Storage:

Store at -80°C.

**The product is shipped with ice packs. Upon receipt, store it immediately at -80°C**

Storage Buffer:

PBS only, pH7.3

For technical support and original validation data for this product please contact:

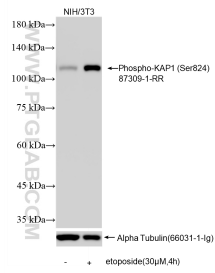
T: 4006900926

E: [Proteintech-CN@ptglab.com](mailto:Proteintech-CN@ptglab.com)

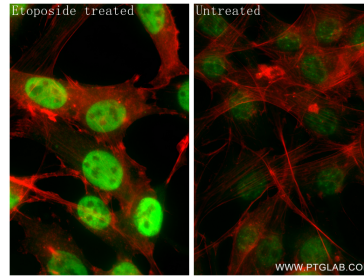
W: [ptgcn.com](http://ptgcn.com)

**This product is exclusively available under Proteintech Group brand and is not available to purchase from any other manufacturer.**

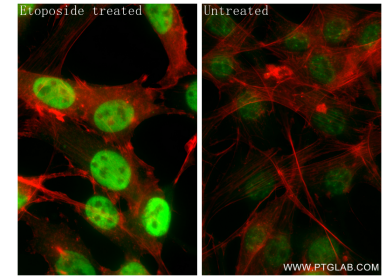
## Selected Validation Data



Non-treated NIH/3T3 cells and etoposide treated NIH/3T3 cells were subjected to SDS PAGE followed by western blot with 87309-1-RR (Phospho-KAP1 (Ser824) antibody) at dilution of 1:3000 incubated at room temperature for 1.5 hours. The membrane was stripped and re-blotted with Alpha Tubulin (66031-1-Ig) antibody as a loading control. This data was developed using the same antibody clone with 87309-1-PBS in a different storage buffer formulation.



Immunofluorescent analysis of (4% PFA) fixed etoposide treated NIH/3T3 cells using Phospho-KAP1 (Ser824) antibody (87309-1-RR, Clone: 252561H1) at dilution of 1:500 and CoraLite®488-Conjugated Goat Anti-Rabbit IgG(H+L) (SA00013-2), CL594-Phalloidin (red). This data was developed using the same antibody clone with 87309-1-PBS in a different storage buffer formulation.



Immunofluorescent analysis of (4% PFA) fixed NIH/3T3 cells using Phospho-KAP1 (Ser824) antibody (87309-1-RR, Clone: 252561H1) at dilution of 1:500 and CoraLite®488-Conjugated Goat Anti-Rabbit IgG(H+L) (SA00013-2), CL594-Phalloidin (red). This data was developed using the same antibody clone with 87309-1-PBS in a different storage buffer formulation.