

For Research Use Only

# ATP6V1B2 Recombinant monoclonal antibody

Catalog Number: 87302-4-RR



## Basic Information

<b>Catalog Number:</b> 87302-4-RR	<b>GenBank Accession Number:</b> BC003100	<b>Purification Method:</b> Protein A purification
<b>Source:</b> Rabbit	<b>GeneID (NCBI):</b> 526	<b>CloneNo.:</b> 252572H5
<b>Isotype:</b> IgG	<b>UNIPROT ID:</b> P21281	<b>Recommended Dilutions:</b> WB: 1:5000-1:50000 IF/ICC: 1:250-1:1000
<b>Immunogen Catalog Number:</b> AG7174	<b>Full Name:</b> ATPase, H <sup>+</sup> transporting, lysosomal 56/58kDa, V1 subunit B2	
	<b>Calculated MW:</b> 57 kDa	
	<b>Observed MW:</b> 56-58 kDa	

## Applications

<b>Tested Applications:</b> WB, IF/ICC, ELISA	<b>Positive Controls:</b>
<b>Species Specificity:</b> human, mouse, rat	<b>WB :</b> mouse brain tissue, HeLa cells, A549 cells, Jurkat cells, K-562 cells, NIH/3T3 cells, HSC-T6 cells
	<b>IF/ICC :</b> HeLa cells,

## Background Information

ATP6V1B2(V-type proton ATPase subunit B, brain isoform) is also named as ATP6B2, VPP3, HO57. It belongs to the ATPase alpha/beta chains family. V-ATPase is an heteromultimeric enzyme composed of a peripheral catalytic V1 complex attached to an integral membrane V0 proton pore complex. The quasi-ubiquitous ATP6V1B2 is one of 2 isoforms of ATP6V1 and is expressed in most cell types, where it plays a major role in organelle acidification (PMID:18667600).

## Storage

**Storage:**  
Store at -20°C. Stable for one year after shipment.  
**Storage Buffer:**  
PBS with 0.02% sodium azide and 50% glycerol, pH7.3  
Aliquoting is unnecessary for -20°C storage

For technical support and original validation data for this product please contact:

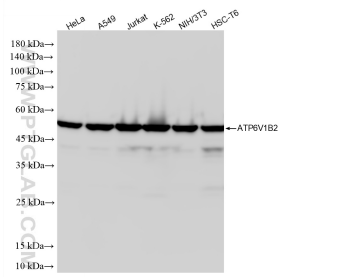
T: 4006900926

E: [Proteintech-CN@ptglab.com](mailto:Proteintech-CN@ptglab.com)

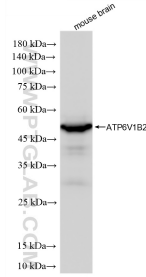
W: [ptgcn.com](http://ptgcn.com)

**This product is exclusively available under Proteintech Group brand and is not available to purchase from any other manufacturer.**

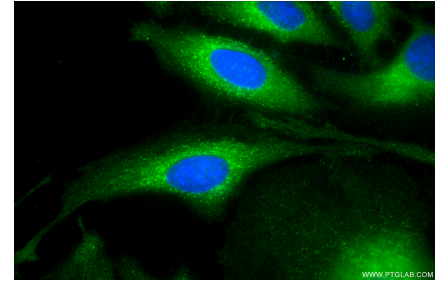
## Selected Validation Data



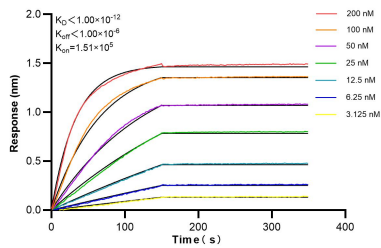
Various lysates were subjected to SDS PAGE followed by western blot with 87302-4-RR (ATP6V1B2 antibody) at dilution of 1:10000 incubated at room temperature for 1.5 hours.



mouse brain tissue were subjected to SDS PAGE followed by western blot with 87302-4-RR (ATP6V1B2 antibody) at dilution of 1:10000 incubated at room temperature for 1.5 hours.



Immunofluorescent analysis of (-20°C Methanol) fixed HeLa cells using ATP6V1B2 antibody (87302-4-RR, Clone: 252572H5) at dilution of 1:500 and CoraLite®488-Conjugated Goat Anti-Rabbit IgG(H+L) (SA00013-2).



Biolayer interferometry (BLI) kinetic assays of 87302-4-RR against Human ATP6V1B2 were performed. The affinity constant is below 1 pM.