

For Research Use Only

PALMD Recombinant monoclonal antibody

Catalog Number:87300-3-RR



Basic Information

Catalog Number:

87300-3-RR

Source:

Rabbit

Isotype:

IgG

Immunogen Catalog Number:

AG9796

GenBank Accession Number:

BC012570

GeneID (NCBI):

54873

UNIPROT ID:

Q9NP74

Full Name:

palmdelphin

Calculated MW:

551 aa, 63 kDa

Observed MW:

80 kDa

Purification Method:

Protein A purification

CloneNo.:

252551B4

Recommended Dilutions:

WB: 1:5000-1:50000

IP: 0.5-4.0 ug for 1.0-3.0 mg of total protein lysate

Applications

Tested Applications:

WB, IP, ELISA

Species Specificity:

human, mouse, rat

Positive Controls:

WB : HeLa cells, mouse lung tissue, L02 cells, HUVEC cells, rat lung tissue

IP : HeLa cells,

Background Information

Palmdelphin, encoded by PALMD gene, is a newly identified cytosolic isoform of paralemmin-1, a lipid raft-associated protein implicated in cell shape control. Paralemmin (Palm) is a prenyl-palmitoyl anchored membrane protein that can drive membrane and process formation in neurons. Previous finding suggest that palmdelphin may peripherally associate with endomembranes or cytoskeleton-linked structures. Palmdelphin appears to be 80 kDa in Western blotting, larger than the predicated of 63 kDa, and this may be due to the acidic nature of this protein or its posttranslational modification.

Storage

Storage:

Store at -20°C. Stable for one year after shipment.

Storage Buffer:

PBS with 0.02% sodium azide and 50% glycerol, pH7.3

Aliquoting is unnecessary for -20°C storage

For technical support and original validation data for this product please contact:

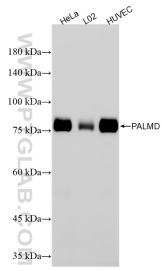
T: 4006900926

E: Proteintech-CN@ptglab.com

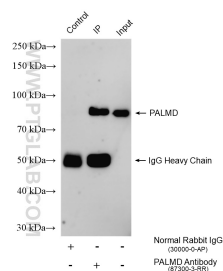
W: ptgcn.com

This product is exclusively available under Proteintech Group brand and is not available to purchase from any other manufacturer.

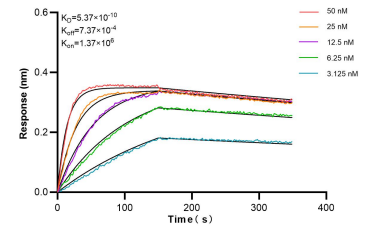
Selected Validation Data



Various lysates were subjected to SDS PAGE followed by western blot with 87300-3-RR (PALMD antibody) at dilution of 1:10000 incubated at room temperature for 1.5 hours.



IP result of anti-PALMD (IP:87300-3-RR, 4ug; Detection:87300-3-RR 1:2000) with HeLa cells lysate 1320 ug.



Bi-layer interferometry (BLI) kinetic assays of 87300-3-RR against Human PALMD were performed. The affinity constant is 0.537 nM.