

For Research Use Only

# PALMD Recombinant monoclonal antibody, PBS Only

Catalog Number:87300-3-PBS



## Basic Information

<b>Catalog Number:</b> 87300-3-PBS	<b>GenBank Accession Number:</b> BC012570	<b>Purification Method:</b> Protein A purification
<b>Source:</b> Rabbit	<b>GeneID (NCBI):</b> 54873	<b>CloneNo.:</b> 252551B4
<b>Isotype:</b> IgG	<b>UNIPROT ID:</b> Q9NP74	
<b>Immunogen Catalog Number:</b> AG9796	<b>Full Name:</b> palmdelphin	
	<b>Calculated MW:</b> 551 aa, 63 kDa	
	<b>Observed MW:</b> 80 kDa	

## Applications

**Tested Applications:**  
WB, IP, Indirect ELISA

**Species Specificity:**  
human, mouse, rat

## Background Information

Palmdelphin, encoded by PALMD gene, is a newly identified cytosolic isoform of paralemmin-1, a lipid raft-associated protein implicated in cell shape control. Paralemmin (PalM) is a prenyl-palmitoyl anchored membrane protein that can drive membrane and process formation in neurons. Previous finding suggest that palmdelphin may peripherally associate with endomembranes or cytoskeleton-linked structures. Palmdelphin appears to be 80 kDa in Western blotting, larger than the predicated of 63 kDa, and this may be due to the acidic nature of this protein or its posttranslational modification.

## Storage

**Storage:**  
Store at -80°C.  
**The product is shipped with ice packs. Upon receipt, store it immediately at -80°C**

**Storage Buffer:**  
PBS only, pH7.3

For technical support and original validation data for this product please contact:

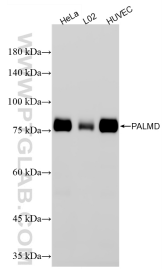
T: 4006900926

E: Proteintech-CN@ptglab.com

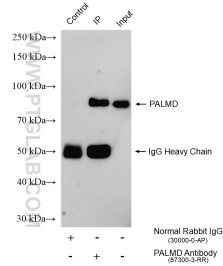
W: ptgcn.com

**This product is exclusively available under Proteintech Group brand and is not available to purchase from any other manufacturer.**

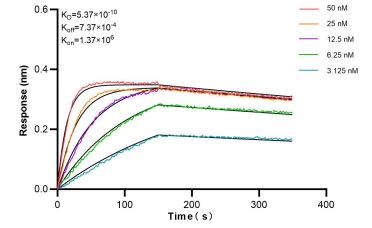
## Selected Validation Data



Various lysates were subjected to SDS PAGE followed by western blot with 87300-3-RR (PALMD antibody) at dilution of 1:10000 incubated at room temperature for 1.5 hours. This data was developed using the same antibody clone with 87300-3-PBS in a different storage buffer formulation.



IP result of anti-PALMD (IP:87300-3-RR, 4ug; Detection:87300-3-RR 1:2000) with HeLa cells lysate 1320 ug. This data was developed using the same antibody clone with 87300-3-PBS in a different storage buffer formulation.



Bi-layer interferometry (BLI) kinetic assays of 87300-3-RR against Human PALMD were performed. The affinity constant is 0.537 nM.