

For Research Use Only

Human IgG4 Recombinant monoclonal antibody, PBS Only (Capture)

Catalog Number:87290-2-PBS



Basic Information

Catalog Number:

87290-2-PBS

Source:

Rabbit

Isotype:

IgG

Immunogen Catalog Number:

EG6675

GenBank Accession Number:

GeneID (NCBI):

3503

Full Name:

immunoglobulin heavy constant
gamma 4 (G4m marker)

Purification Method:

Protein A purification

CloneNo.:

251291B12

Applications

Tested Applications:

Cytometric bead array, Indirect ELISA

Species Specificity:

human

Background Information

Storage

Storage:

Store at -80°C.

The product is shipped with ice packs. Upon receipt, store it immediately at -80°C

Storage Buffer:

PBS only, pH7.3

For technical support and original validation data for this product please contact:

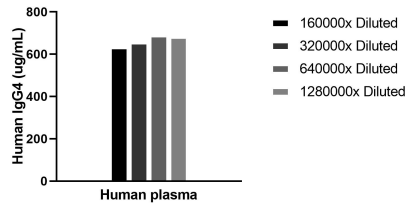
T: 4006900926

E: Proteintech-CN@ptglab.com

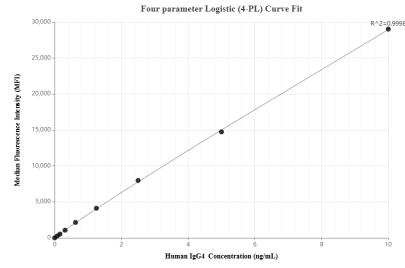
W: ptgcn.com

This product is exclusively available under Proteintech Group brand and is not available to purchase from any other manufacturer.

Selected Validation Data



The mean IgG4 concentration was determined to be 663.4 ug/mL in Human plasma.



Cytometric bead array standard curve of MP02951-1, IgG4 Recombinant Matched Antibody Pair, PBS Only. Capture antibody: 87290-2-PBS. Detection antibody: 87290-1-PBS. Standard: Eg6675. Range: 0.078-10 ng/mL.