

For Research Use Only

# Human IgG4 Recombinant monoclonal antibody, PBS Only (Detector)

Catalog Number:87290-13-PBS



## Basic Information

Catalog Number:

87290-13-PBS

Source:

Rabbit

Isotype:

IgG

Immunogen Catalog Number:

EG6675

GenBank Accession Number:

GeneID (NCBI):

3503

Full Name:

immunoglobulin heavy constant  
gamma 4 (G4m marker)

Purification Method:

Protein A purification

CloneNo.:

251291C6

## Applications

Tested Applications:

Sandwich ELISA, Indirect ELISA

Species Specificity:

human

## Background Information

### Storage

Storage:

Store at -80°C.

**The product is shipped with ice packs. Upon receipt, store it immediately at -80°C**

Storage Buffer:

PBS only, pH7.3

For technical support and original validation data for this product please contact:

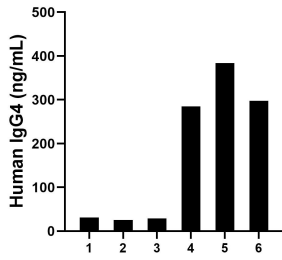
T: 4006900926

E: [Proteintech-CN@ptglab.com](mailto:Proteintech-CN@ptglab.com)

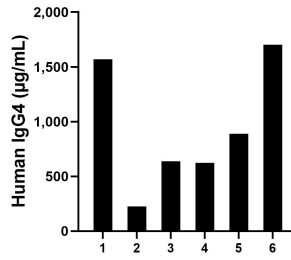
W: [ptgcn.com](http://ptgcn.com)

**This product is exclusively available under Proteintech Group brand and is not available to purchase from any other manufacturer.**

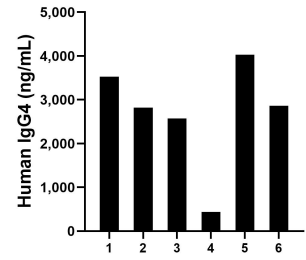
## Selected Validation Data



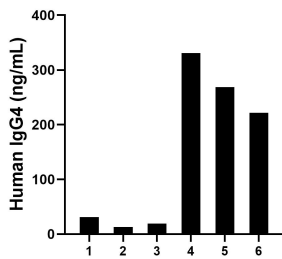
Saliva of six individual healthy human donors was measured. The human IgG4 concentration of detected samples was determined to be 175.21 ng/mL with a range of 25.29 - 383.71 ng/mL.



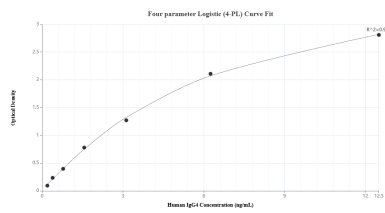
Plasma of six individual healthy human donors was measured. The human IgG4 concentration of detected samples was determined to be 941.42 µg/mL with a range of 225.54 - 1,701.22 µg/mL.



Human milk of six individual healthy human donors was measured. The human IgG4 concentration of detected samples was determined to be 2,708.86 ng/mL with a range of 439.50 - 4,028.35 ng/mL.



Urine of six individual healthy human donors was measured. The human IgG4 concentration of detected samples was determined to be 147.44 ng/mL with a range of 12.85 - 331.11 ng/mL.



Sandwich ELISA standard curve of MP02951-2, Human IgG4 Recombinant Matched Antibody Pair - PBS only. 87290-8-PBS was coated to a plate as the capture antibody and incubated with serial dilutions of standard Eg6675. 87290-13-PBS was HRP conjugated as the detection antibody. Range: 0.195-12.5 ng/mL