

For Research Use Only

Human IgG3 Recombinant monoclonal antibody, PBS Only (Detector)

Catalog Number:87288-3-PBS



Basic Information

Catalog Number:

87288-3-PBS

Source:

Rabbit

Isotype:

IgG

Immunogen Catalog Number:

EG6674

GenBank Accession Number:

GeneID (NCBI):

3502

Full Name:

immunoglobulin heavy constant
gamma 3 (G3m marker)

Purification Method:

Protein A purification

CloneNo.:

251300A11

Applications

Tested Applications:

Sandwich ELISA, Indirect ELISA

Species Specificity:

human

Background Information

Storage

Storage:

Store at -80°C.

The product is shipped with ice packs. Upon receipt, store it immediately at -80°C

Storage Buffer:

PBS only, pH7.3

For technical support and original validation data for this product please contact:

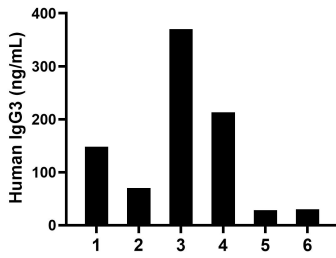
T: 4006900926

E: Proteintech-CN@ptglab.com

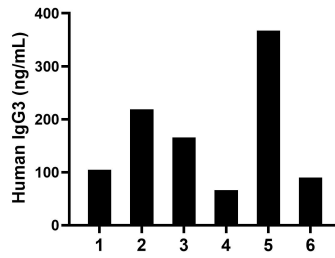
W: ptgcn.com

This product is exclusively available under Proteintech Group brand and is not available to purchase from any other manufacturer.

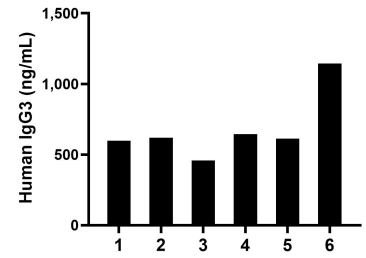
Selected Validation Data



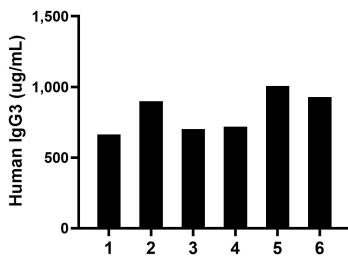
Saliva of six individual healthy human donors was measured. The IgG3 concentration of detected samples was determined to be 143.38 ng/mL with a range of 28.55-370.13 ng/mL.



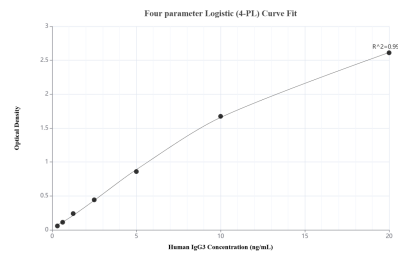
Urine of six individual healthy human donors was measured. The IgG3 concentration of detected samples was determined to be 168.77 ng/mL with a range of 66.33-367.03 ng/mL.



Human milk of six individual healthy human donors was measured. The IgG3 concentration of detected samples was determined to be 679.38 ng/mL with a range of 457.66-1,145.17 ng/mL.



Plasma of six individual healthy human donors was measured. The IgG3 concentration of detected samples was determined to be 819.81 ug/mL with a range of 663.02-1,007.34 ug/mL.



Sandwich ELISA standard curve of MP02949-2, Human IgG3 Recombinant Matched Antibody Pair - PBS only. 87288-4-PBS was coated to a plate as the capture antibody and incubated with serial dilutions of standard Eg6674. 87288-3-PBS was HRP conjugated as the detection antibody. Range: 0.313-20 ng/mL.