

For Research Use Only

# Human IgG3 Recombinant monoclonal antibody, PBS Only (Capture)

Catalog Number:87288-2-PBS



## Basic Information

Catalog Number:

87288-2-PBS

Source:

Rabbit

Isotype:

IgG

Immunogen Catalog Number:

EG6674

GenBank Accession Number:

GeneID (NCBI):

3502

Full Name:

immunoglobulin heavy constant gamma 3 (G3m marker)

Purification Method:

Protein A purification

CloneNo.:

251300G5

## Applications

Tested Applications:

Cytometric bead array, Indirect ELISA

Species Specificity:

human

## Background Information

### Storage

Storage:

Store at -80°C.

**The product is shipped with ice packs. Upon receipt, store it immediately at -80°C**

Storage Buffer:

PBS only, pH7.3

For technical support and original validation data for this product please contact:

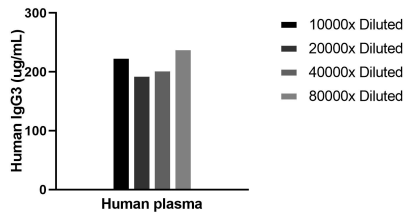
T: 4006900926

E: [Proteintech-CN@ptglab.com](mailto:Proteintech-CN@ptglab.com)

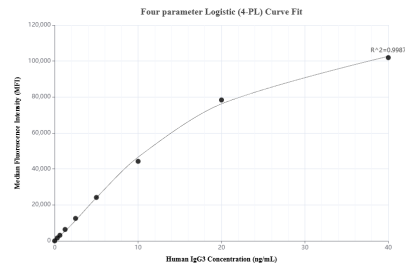
W: [ptgcn.com](http://ptgcn.com)

**This product is exclusively available under Proteintech Group brand and is not available to purchase from any other manufacturer.**

## Selected Validation Data



The mean IgG3 concentration was determined to be 215.8 ug/mL in Human plasma.



Cytometric bead array standard curve of MP02949-1, IgG3 Recombinant Matched Antibody Pair, PBS Only. Capture antibody: 87288-2-PBS. Detection antibody: 87288-1-PBS. Standard: Eg6674. Range: 0.312-40 ng/mL.