

For Research Use Only

# UBE2O Recombinant monoclonal antibody, PBS Only

Catalog Number: 87282-1-PBS



## Basic Information

<b>Catalog Number:</b> 87282-1-PBS	<b>GenBank Accession Number:</b> BC007822	<b>Purification Method:</b> Protein A purification
<b>Source:</b> Rabbit	<b>GeneID (NCBI):</b> 63893	<b>CloneNo.:</b> 252545E2
<b>Isotype:</b> IgG	<b>UNIPROT ID:</b> Q9C0C9	
<b>Immunogen Catalog Number:</b> AG8580	<b>Full Name:</b> ubiquitin-conjugating enzyme E2O	
	<b>Calculated MW:</b> 1292 aa, 141 kDa	
	<b>Observed MW:</b> 200 kDa	

## Applications

**Tested Applications:**  
WB, IF/ICC, Indirect ELISA

**Species Specificity:**  
human, mouse, rat

## Background Information

UBE2O, also named as KIAA1734, belongs to the ubiquitin-conjugating enzyme family. It catalyzes the covalent attachment of ubiquitin to other proteins. UBE2O has a calculated molecular mass of 141 kDa, and many bands can be detected as 140-170 kDa and 200-230 kDa (PMID: 28774900, 23455153, 28774922, 11311559).

## Storage

**Storage:**  
Store at -80°C.  
**The product is shipped with ice packs. Upon receipt, store it immediately at -80°C**

**Storage Buffer:**  
PBS only, pH7.3

For technical support and original validation data for this product please contact:

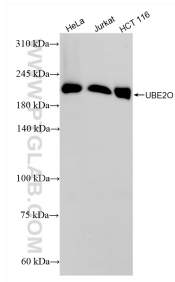
T: 4006900926

E: [Proteintech-CN@ptglab.com](mailto:Proteintech-CN@ptglab.com)

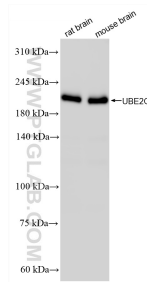
W: [ptgcn.com](http://ptgcn.com)

**This product is exclusively available under Proteintech Group brand and is not available to purchase from any other manufacturer.**

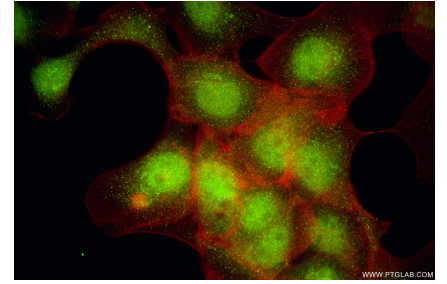
## Selected Validation Data



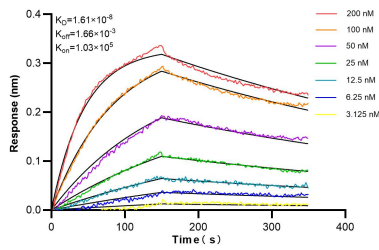
Various lysates were subjected to SDS PAGE followed by western blot with 87282-1-RR (UBE2O antibody) at dilution of 1:2000 incubated at room temperature for 1.5 hours. This data was developed using the same antibody clone with 87282-1-PBS in a different storage buffer formulation.



Various lysates were subjected to SDS PAGE followed by western blot with 87282-1-RR (UBE2O antibody) at dilution of 1:2000 incubated at room temperature for 1.5 hours. This data was developed using the same antibody clone with 87282-1-PBS in a different storage buffer formulation.



Immunofluorescent analysis of (4% PFA) fixed A431 cells using UBE2O antibody (87282-1-RR, Clone: 252545E2) at dilution of 1:200 and CoraLite® 488-Conjugated Goat Anti-Rabbit IgG(H+L) (SA00013-2), CL594-Phalloidin (red). This data was developed using the same antibody clone with 87282-1-PBS in a different storage buffer formulation.



Biolayer interferometry (BLI) kinetic assays of 87282-1-RR against Human UBE2O were performed. The affinity constant is 16.1 nM.