

For Research Use Only

# COL8A1 Recombinant monoclonal antibody, PBS Only (Capture)

Catalog Number:87280-3-PBS



## Basic Information

<b>Catalog Number:</b> 87280-3-PBS	<b>GenBank Accession Number:</b> BC013581	<b>Purification Method:</b> Protein A purification
<b>Source:</b> Rabbit	<b>GeneID (NCBI):</b> 1295	<b>CloneNo.:</b> 252552A7
<b>Isotype:</b> IgG	<b>UNIPROT ID:</b> P27658	
<b>Immunogen Catalog Number:</b> AG10607	<b>Full Name:</b> collagen, type VIII, alpha 1	
	<b>Calculated MW:</b> 744 aa, 73 kDa	

## Applications

**Tested Applications:**  
Sandwich ELISA, Indirect ELISA

**Species Specificity:**  
human

## Background Information

### Storage

**Storage:**  
Store at -80°C.  
**The product is shipped with ice packs. Upon receipt, store it immediately at -80°C**

**Storage Buffer:**  
PBS only, pH7.3

For technical support and original validation data for this product please contact:

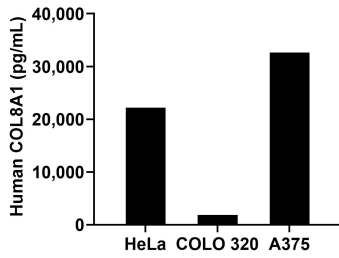
T: 4006900926

E: [Proteintech-CN@ptglab.com](mailto:Proteintech-CN@ptglab.com)

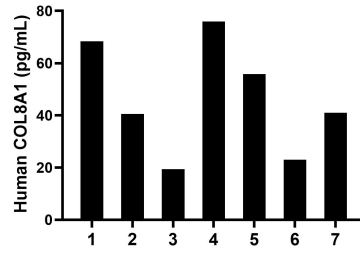
W: [ptgcn.com](http://ptgcn.com)

**This product is exclusively available under Proteintech Group brand and is not available to purchase from any other manufacturer.**

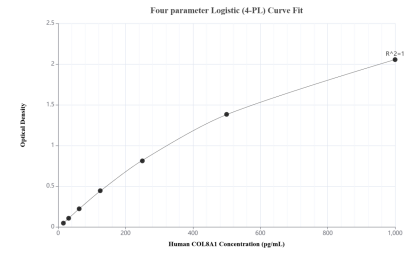
## Selected Validation Data



The mean COL8A1 concentration was determined to be 22,162.3 pg/mL in HeLa cell extract based on a 1.2 mg/mL extract load, 1,857.3 pg/mL in COLO 320 cell extract based on a 1.2 mg/mL extract load and 32,654.0 pg/mL in A375 cell extract based on a 1.6 mg/mL extract load.



Plasma of seven individual healthy human donors was measured. The COL8A1 concentration of detected samples was determined to be 46.3 pg/mL with a range of 19.4-75.9 pg/mL.



Sandwich ELISA standard curve of MP02961-1, Human COL8A1 Recombinant Matched Antibody Pair - PBS only. 87280-3-PBS was coated to a plate as the capture antibody and incubated with serial dilutions of standard Ag10607. 87280-2-PBS was HRP conjugated as the detection antibody. Range: 15.6-1000 pg/mL.