

For Research Use Only

COL8A1 Recombinant monoclonal antibody, PBS Only (Detector)

Catalog Number:87280-2-PBS



Basic Information

Catalog Number: 87280-2-PBS	GenBank Accession Number: BC013581	Purification Method: Protein A purification
Source: Rabbit	GeneID (NCBI): 1295	CloneNo.: 252552B3
Isotype: IgG	UNIPROT ID: P27658	
Immunogen Catalog Number: AG10607	Full Name: collagen, type VIII, alpha 1	
	Calculated MW: 744 aa, 73 kDa	

Applications

Tested Applications:
Sandwich ELISA, Indirect ELISA

Species Specificity:
human

Background Information

Storage

Storage:
Store at -80°C.
The product is shipped with ice packs. Upon receipt, store it immediately at -80°C

Storage Buffer:
PBS only, pH7.3

For technical support and original validation data for this product please contact:

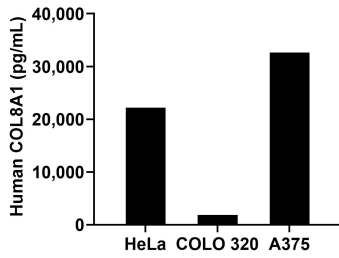
T: 4006900926

E: Proteintech-CN@ptglab.com

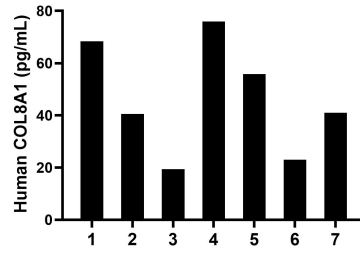
W: ptgcn.com

This product is exclusively available under Proteintech Group brand and is not available to purchase from any other manufacturer.

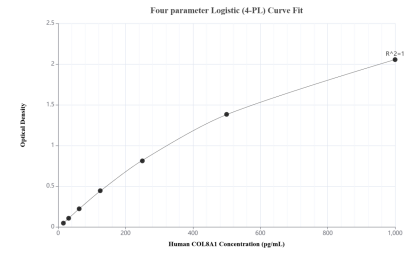
Selected Validation Data



The mean COL8A1 concentration was determined to be 22,162.3 pg/mL in HeLa cell extract based on a 1.2 mg/mL extract load, 1,857.3 pg/mL in COLO 320 cell extract based on a 1.2 mg/mL extract load and 32,654.0 pg/mL in A375 cell extract based on a 1.6 mg/mL extract load.



Plasma of seven individual healthy human donors was measured. The COL8A1 concentration of detected samples was determined to be 46.3 pg/mL with a range of 19.4-75.9 pg/mL.



Sandwich ELISA standard curve of MP02961-1, Human COL8A1 Recombinant Matched Antibody Pair - PBS only. 87280-3-PBS was coated to a plate as the capture antibody and incubated with serial dilutions of standard Ag10607. 87280-2-PBS was HRP conjugated as the detection antibody. Range: 15.6-1000 pg/mL.