

For Research Use Only

CLDN11 Recombinant monoclonal antibody, PBS Only (Capture)

Catalog Number: 87261-1-PBS



Basic Information

Catalog Number:

87261-1-PBS

Source:

Rabbit

Isotype:

IgG

GenBank Accession Number:

BC013577

GeneID (NCBI):

5010

UNIPROT ID:

O75508

Full Name:

claudin 11

Calculated MW:

207 aa, 22 kDa

Purification Method:

Protein A purification

CloneNo.:

251586C2

Applications

Tested Applications:

Sandwich ELISA, Indirect ELISA

Species Specificity:

human

Background Information

Storage

Storage:

Store at -80°C.

The product is shipped with ice packs. Upon receipt, store it immediately at -80°C

Storage Buffer:

PBS only, pH7.3

For technical support and original validation data for this product please contact:

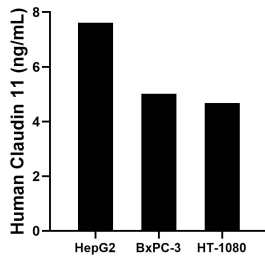
T: 4006900926

E: Proteintech-CN@ptglab.com

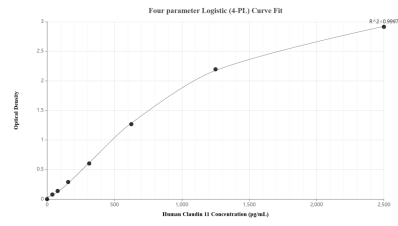
W: ptgcn.com

This product is exclusively available under Proteintech Group brand and is not available to purchase from any other manufacturer.

Selected Validation Data



The mean Claudin 11 concentration was determined to be 7.61 ng/mL in HepG2 cell extract based on a 1.20 mg/mL extract load, 5.01 ng/mL in BxPC-3 cell extract based on a 1.20 mg/mL extract load and 4.67 ng/mL in HT-1080 cell extract based on a 1.50 mg/mL extract load.



Sandwich ELISA standard curve of MP03284-1, Human Claudin 11 Recombinant Matched Antibody Pair - PBS only. 87261-1-PBS was coated to a plate as the capture antibody and incubated with serial dilutions of standard SY02670. 87261-2-PBS was HRP conjugated as the detection antibody. Range: 39.1-2500 pg/mL.