

For Research Use Only

PPM1G Recombinant monoclonal antibody

Catalog Number:87250-3-RR



Basic Information

| | | |
|--|---|--|
| Catalog Number: 87250-3-RR | GenBank Accession Number: BC000057 | Purification Method: Protein A purification |
| Source: Rabbit | GeneID (NCBI): 5496 | CloneNo.: 252477B6 |
| Isotype: IgG | UNIPROT ID: O15355 | Recommended Dilutions: WB: 1:2000-1:10000 IHC: 1:500-1:2000 |
| Immunogen Catalog Number: AG7751 | Full Name: protein phosphatase 1G (formerly 2C), magnesium-dependent, gamma isoform | IF/ICC: 1:250-1:1000 |
| | Calculated MW: 59 kDa | |
| | Observed MW: 70 kDa | |

Applications

Tested Applications:
WB, IHC, IF/ICC, ELISA

Species Specificity:
human

Note-IHC: suggested antigen retrieval with TE buffer pH 9.0; (*) Alternatively, antigen retrieval may be performed with citrate buffer pH 6.0

Positive Controls:

WB : HCT 116 cells, HeLa cells, HEK-293T cells, Jurkat cells, MCF-7 cells

IHC : mouse testis tissue,

IF/ICC : MCF-7 cells,

Background Information

Storage

Storage:
Store at -20°C. Stable for one year after shipment.

Storage Buffer:
PBS with 0.02% sodium azide and 50% glycerol, pH7.3

Aliquoting is unnecessary for -20°C storage

For technical support and original validation data for this product please contact:

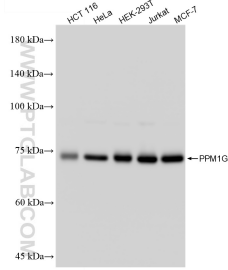
T: 4006900926

E: Proteintech-CN@ptglab.com

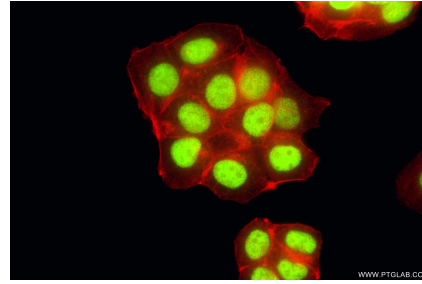
W: ptgcn.com

This product is exclusively available under Proteintech Group brand and is not available to purchase from any other manufacturer.

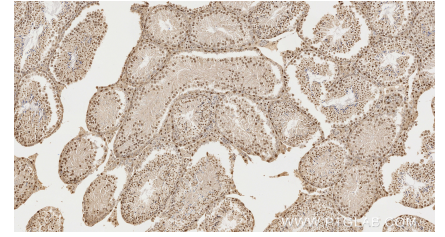
Selected Validation Data



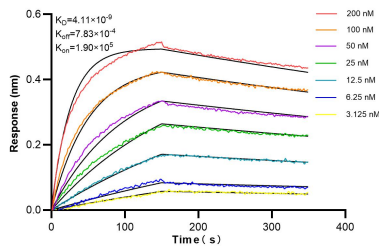
Various lysates were subjected to SDS PAGE followed by western blot with 87250-3-RR (PPM1G antibody) at dilution of 1:5000 incubated at room temperature for 1.5 hours.



Immunofluorescent analysis of (4% PFA) fixed MCF-7 cells using PPM1G antibody (87250-3-RR, Clone: 252477B6) at dilution of 1:500 and CoraLite® 488-Conjugated Goat Anti-Rabbit IgG(H+L) (SA00013-2), CL594-Phalloidin (red).



Immunohistochemical analysis of paraffin-embedded mouse testis tissue slide using 87250-3-RR (PPM1G antibody) at dilution of 1:1000 (under 10x lens). Heat mediated antigen retrieval with Tris-EDTA buffer (pH 9.0).



Biacore BLI kinetic assays of 87250-3-RR against Human PPM1G were performed. The affinity constant is 4.11 nM.