

For Research Use Only

# PPM1G Recombinant monoclonal antibody, PBS Only

Catalog Number:87250-3-PBS



## Basic Information

<b>Catalog Number:</b> 87250-3-PBS	<b>GenBank Accession Number:</b> BC000057	<b>Purification Method:</b> Protein A purification
<b>Source:</b> Rabbit	<b>GeneID (NCBI):</b> 5496	<b>CloneNo.:</b> 252477B6
<b>Isotype:</b> IgG	<b>UNIPROT ID:</b> O15355	
<b>Immunogen Catalog Number:</b> AG7751	<b>Full Name:</b> protein phosphatase 1G (formerly 2C), magnesium-dependent, gamma isoform	
	<b>Calculated MW:</b> 59 kDa	
	<b>Observed MW:</b> 70 kDa	

## Applications

**Tested Applications:**  
WB, IHC, IF/ICC, Indirect ELISA

**Species Specificity:**  
human

## Background Information

## Storage

**Storage:**  
Store at -80°C.  
**The product is shipped with ice packs. Upon receipt, store it immediately at -80°C**

**Storage Buffer:**  
PBS only, pH7.3

For technical support and original validation data for this product please contact:

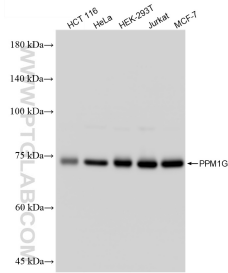
T: 4006900926

E: [Proteintech-CN@ptglab.com](mailto:Proteintech-CN@ptglab.com)

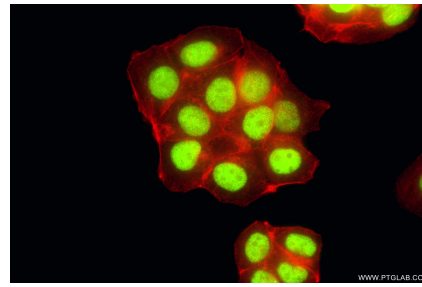
W: [ptgcn.com](http://ptgcn.com)

**This product is exclusively available under Proteintech Group brand and is not available to purchase from any other manufacturer.**

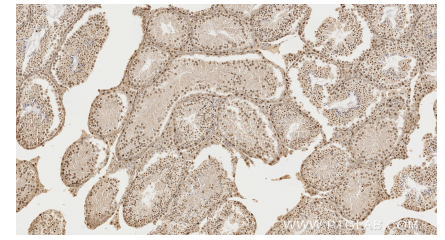
## Selected Validation Data



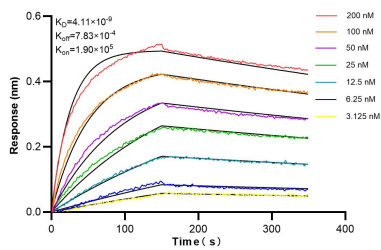
Various lysates were subjected to SDS PAGE followed by western blot with 87250-3-RR (PPM1G antibody) at dilution of 1:5000 incubated at room temperature for 1.5 hours. This data was developed using the same antibody clone with 87250-3-PBS in a different storage buffer formulation.



Immunofluorescent analysis of (4% PFA) fixed MCF-7 cells using PPM1G antibody (87250-3-RR, Clone: 252477B6) at dilution of 1:500 and CoraLite® 488-Conjugated Goat Anti-Rabbit IgG(H+L) (SA00013-2), CL594-Phalloidin (red). This data was developed using the same antibody clone with 87250-3-PBS in a different storage buffer formulation.



Immunohistochemical analysis of paraffin-embedded mouse testis tissue slide using 87250-3-RR (PPM1G antibody) at dilution of 1:1000 (under 10x lens). Heat mediated antigen retrieval with Tris-EDTA buffer (pH 9.0). This data was developed using the same antibody clone with 87250-3-PBS in a different storage buffer formulation.



Biolayer interferometry (BLI) kinetic assays of 87250-3-RR against Human PPM1G were performed. The affinity constant is 4.11 nM.