

For Research Use Only

GAS6 Recombinant monoclonal antibody, PBS Only (Capture)

Catalog Number:87249-3-PBS



Basic Information

Catalog Number:

87249-3-PBS

Source:

Rabbit

Isotype:

IgG

Immunogen Catalog Number:

EG4871

GenBank Accession Number:

NM_000820.3

GeneID (NCBI):

2621

UNIPROT ID:

Q14393-2

Full Name:

growth arrest-specific 6

Calculated MW:

75 kDa

Purification Method:

Protein A purification

CloneNo.:

252407C10

Applications

Tested Applications:

Sandwich ELISA, Indirect ELISA

Species Specificity:

human

Background Information

Storage

Storage:

Store at -80°C.

The product is shipped with ice packs. Upon receipt, store it immediately at -80°C

Storage Buffer:

PBS only, pH7.3

For technical support and original validation data for this product please contact:

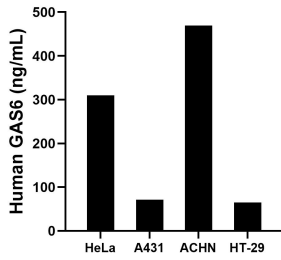
T: 4006900926

E: Proteintech-CN@ptglab.com

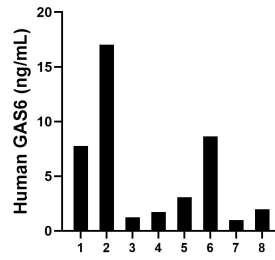
W: ptgcn.com

This product is exclusively available under Proteintech Group brand and is not available to purchase from any other manufacturer.

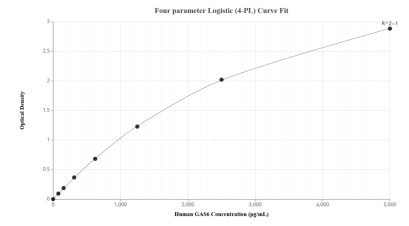
Selected Validation Data



The mean GAS6 concentration was determined to be 310.0 ng/mL in HeLa cell extract based on a 1.2 mg/mL extract load, 71.3 ng/mL in A431 cell extract based on a 1.2 mg/mL extract load, 469.1 ng/mL in ACHN cell extract based on a 1.2 mg/mL extract load and 65.3 ng/mL in HT-29 cell extract based on a 1.1 mg/mL extract load.



Plasma of eight individual healthy human donors was measured. The GAS6 concentration of detected samples was determined to be 6.6 ng/mL with a range of 1.3-17.0 ng/mL.



Sandwich ELISA standard curve of MP03067-1, Human GAS6 Recombinant Matched Antibody Pair - PBS only. 87249-3-PBS was coated to a plate as the capture antibody and incubated with serial dilutions of standard Eg4871. 87249-2-PBS was HRP conjugated as the detection antibody. Range: 78.1-5000 pg/mL.