

For Research Use Only

# TEM1/CD248 Recombinant monoclonal antibody

Catalog Number: 87247-1-RR



## Basic Information

<b>Catalog Number:</b> 87247-1-RR	<b>GenBank Accession Number:</b> BC051340	<b>Purification Method:</b> Protein A purification
<b>Source:</b> Rabbit	<b>GeneID (NCBI):</b> 57124	<b>CloneNo.:</b> 251338A5
<b>Isotype:</b> IgG	<b>UNIPROT ID:</b> Q9HCU0	<b>Recommended Dilutions:</b> WB: 1:5000-1:50000 IF-P: 1:50-1:500
<b>Immunogen Catalog Number:</b> EG4427	<b>Full Name:</b> CD248 molecule, endosialin	
	<b>Calculated MW:</b> 757 aa, 81 kDa	
	<b>Observed MW:</b> 100 kDa	

## Applications

<b>Tested Applications:</b> WB, IF-P, ELISA	<b>Positive Controls:</b>
<b>Species Specificity:</b> human, mouse	<b>WB :</b> HUVEC cells, COLO 205 cells, A2780 cells, U2OS cells, Caco-2 cells, NIH/3T3 cells, bEnd.3 cells
	<b>IF-P :</b> human placenta tissue,

## Background Information

TEM1 (Tumor endothelial marker 1), also named as CD248, Endosialin and CD164L1, is a C-type lectin-like domain (CTLN) containing type I transmembrane glycoprotein. It is now considered to be a highly selective marker for activated perivascular and stromal cells, detected in most cancers and at least some inflammatory disorders. CD248 plays a role in tumor angiogenesis. It is a potential diagnostic tool and therapeutic target of inflammatory and malignant diseases. Two isoforms of human TEM1 exist. The calculated molecular weights of the two isoforms are 81 kDa and 46 kDa, respectively. Native TEM1 can be glycosylated, and the glycosylated form has a larger apparent molecular weight than 81 kDa.

## Storage

**Storage:**  
Store at -20°C. Stable for one year after shipment.  
**Storage Buffer:**  
PBS with 0.02% sodium azide and 50% glycerol, pH7.3  
Aliquoting is unnecessary for -20°C storage

For technical support and original validation data for this product please contact:

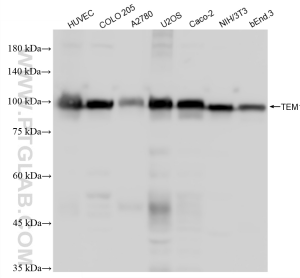
T: 4006900926

E: [Proteintech-CN@ptglab.com](mailto:Proteintech-CN@ptglab.com)

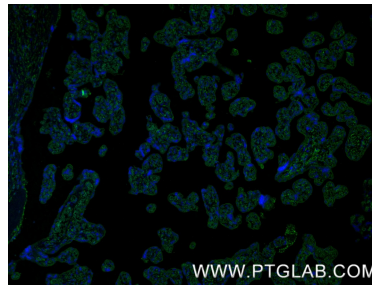
W: [ptgcn.com](http://ptgcn.com)

**This product is exclusively available under Proteintech Group brand and is not available to purchase from any other manufacturer.**

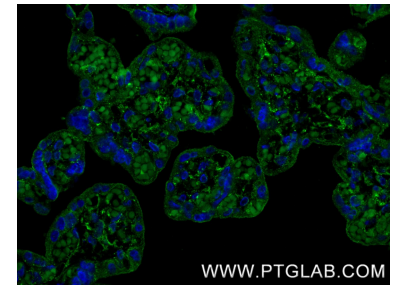
## Selected Validation Data



Various lysates were subjected to SDS PAGE followed by western blot with 87247-1-RR (CD248 antibody) at dilution of 1:10000 incubated at room temperature for 1.5 hours.



Immunofluorescent analysis of (4% PFA) fixed paraffin-embedded human placenta tissue using TEM1 antibody (87247-1-RR, Clone: 251338A5) at dilution of 1:200 and CoraLite@488-Conjugated Goat Anti-Rabbit IgG(H+L) (SA00013-2). Heat mediated antigen retrieval with Tris-EDTA buffer (pH 9.0).



Immunofluorescent analysis of (4% PFA) fixed paraffin-embedded human placenta tissue using TEM1 antibody (87247-1-RR, Clone: 251338A5) at dilution of 1:200 and CoraLite@488-Conjugated Goat Anti-Rabbit IgG(H+L) (SA00013-2). Heat mediated antigen retrieval with Tris-EDTA buffer (pH 9.0).